

Precision Ball Screws Standard Nut - Shaft Dia. 10: Lead 2, 4, 10

Accuracy Grade C3, C5, C7

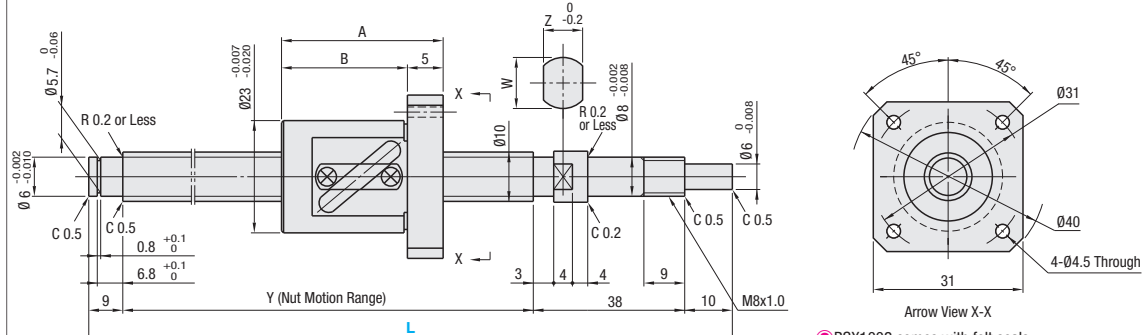


RoHS

Nut Type	Type	Accuracy Grade	Shaft Dia.	Lead	Screw Shaft		Nut	
					Material	Hardness	Material	Hardness
Standard Nut	BSX	C3	10	2	* 4150 Alloy Steel	* Induction Hardened 58-62HRC	JIS SCM420	Carburized 58-62HRC
	BSS	C5		2, 4, 10				
	BSSE	C7		2, 4				

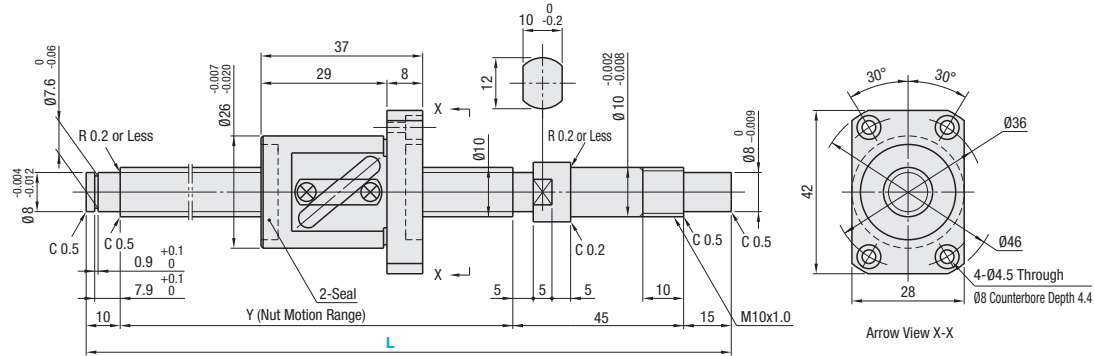
* For 1002, Screw Shaft Material JIS SCM415 is carburized.

BSX/BSS/BSSE1002

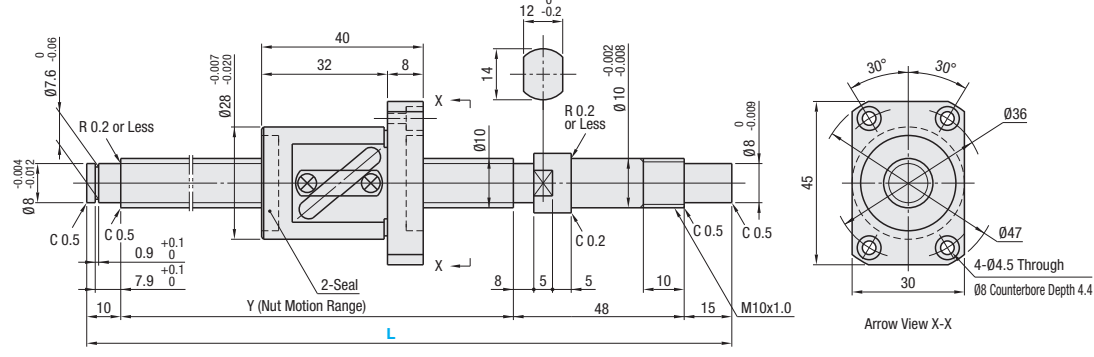


BSX1002 comes with felt seals.

BSS/BSSE1004



BSS1010



Nut Type	Accuracy Grade	Part Number		1mm Increment L	Y	A	B	Z	W	Ball Dia.	Ball Center Dia.	Screw Root Dia.	Number of Circuits	Basic Load Rating		Axial Play	Preload Torque N-cm	Twisting Direction	
		Type	Screw Shaft O.D.											Lead	C (Dynamic) kN				Co (Static) kN
Standard Nut	C3	BSX	10	100-310	L-57	30	25	10	11.5	1.5875	10.3	(8.6)	2.5 turns, 1 row	1.41	1.65	0 (Preloaded)	0.3-2.5	Right	
	C5	BSS		02		100-315	27	22	8					10	2.25	3.3	0.005 or Less		0.5 or Less
	C7	BSSE		04		150-380	-	-	-					-	3.35	5.9	0.005 or Less		1.0 or Less
	C5	BSS		10	150-450	L-73	-	-	-	-	2.3812	10.6	(8.1)	1.5 turns, 1 row	2.2	3.5	0.030 or Less	-	Right
	C7	BSSE		04	150-380		-	-	-	-	3.35	5.9	0.005 or Less		1.0 or Less				
	C5	BSS		10	150-450		-	-	-	-	2.2	3.5	0.005 or Less		1.0 or Less				

kgf=Nx0.101972

Price [Configure Online](#)

Nut Type	Accuracy Grade	Part Number	Unit Price 1-4 pc(s).							
			L100-149	L150-200	L201-248	L249-250	L251-310	L311-315	L316-380	L381-450
Standard Nut	C3	BSX1002								
	C5	BSS1002								
	C7	BSSE1002								
	C5	BSS1004								
	C7	BSSE1004								

For orders larger than indicated quantity, please request a quotation.

Ordering Example

Part Number - L

- BSX1002 - 200
- BSS1004L - 320 (L Type Greased)
- BSSE1004G - 150 (G Type Greased)

Days to Ship [Configure Online](#)

- Notes
- Filled with lithium soap based grease (Alvania Grease S2 made by Showa Shell Sekiyu K.K.)
 - Caution: Do not let nuts overrun its stroke or remove nuts from screw shafts. It may cause balls to fall out or damage ball recirculation parts.
 - Various grease options are available. For specifications, see P612. Not applicable to BSX.
 - For accuracy of Ball Screws, see P612, 614
 - For details of Support Units, see P653-P668

Alterations

Part Number - L - (FC, KC, etc.)

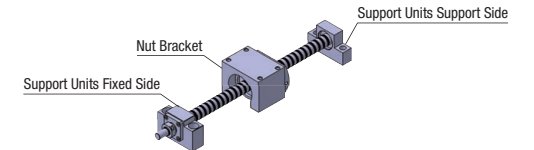
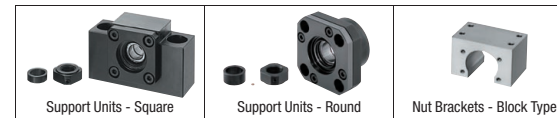
BSS1004 - 270 - SC10

Alterations	Code	Spec.	Price Adder
No Machining on Support Side Shaft End	NC	No machining added on the support side shaft end. (Ordering Code) NC	
Ball Nut Orientation Reversed (Support Side / Fixed Side)	RLC	Changes the nut direction. (Ordering Code) RLC	
No Retaining Ring Groove on Support Side Shaft End	RNC	Retaining ring groove in not machined on the support side shaft end. (Ordering Code) RNC Combination with FC is not available.	
Change Support Side Shaft End Machining	GC	Changes the machining on the support side. Q is selectable from 6 or 8. Y dimension is shortened. G=1mm Increment (Ordering Code) GC-08-G20 5≤G≤Qx3 Not applicable to 1002.	
Change Support Side Shaft End Length	FC	Changes the length of the support side shaft end. FC=1mm Increment (Ordering Code) FC20	

Alterations	Code	Spec.	Price Adder
Keyway on Fixed Side Shaft End Detailed Keyway Dimensions see P614	KC	Adds a keyway on the fixed side shaft end. KC=1mm Increment (Ordering Code) KC10 3≤KC≤14(9)	
Keyway on Fixed Side Shaft End	KLC	Adds a keyway at a customer specified area on the fixed side shaft end. (Keyway dim. is same as KC.) K, S=1mm Increment (Ordering Code) KLC-K5-S1 4≤K+S≤14(9)	
Flat Machined on Fixed Side Shaft End	SC	Adds a flat on the fixed side shaft end. SC=1mm Increment (Ordering Code) SC7 5≤SC≤14(9)	
2 Flats Machined on Fixed Side Shaft End	SWC, SGC, SGC	Adds two flats on the fixed side shaft end. SWC: 90° Position SGC: 120° Position 1mm Increment (Ordering Code) SWC10 5≤SWC, SGC≤14(9)	

Dimensions in () are for 1002.

Peripherals: combination of the following parts are available.



Combination with Support Units

Ball Screw Part Number	Recommended Support Unit			
	Type	Screw Shaft O.D.	Lead	Page
BSX	Round	10	02	P.665
			04	P.667
			08	P.659
			10	P.663
BSS BSSE	Round	10	02	P.665
			04	P.667
			08	P.659
			10	P.663
BSS BSSE	Square	10	02	P.665
			04	P.667
			08	P.659
			10	P.663
BSS	Round	10	02	P.665
			04	P.667
			08	P.659
			10	P.663

Combination with Nut Brackets

Ball Screw Part Number	Recommended Nut Bracket		
	Type	Screw Shaft O.D.	Page
BSX	10	02	P.670
		04	P.670
BSS BSSE	10	02	P.670
		04	P.670

A variety of materials and surface treatments for Nut Brackets is available. (P.670)

Other than the part numbers shown above, Support Units with various configurations and surface treatments are also available. (P.653-P.668)