



For Pricing and Days to Ship, Please Configure Online.

Lead Screw Support Units - Square Fixed Side Radial Bearing Type

Lead Screw Support Units - Square Support Side

Listed Support Side Support Unit Sets are also available by adding -SET to part number of Fixed Side Support Units on P.682.

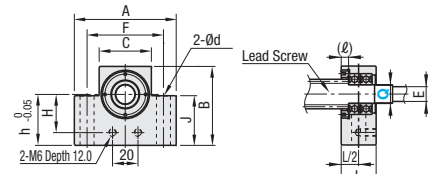
Lead Screw Support Unit Main Body



Support Unit Set	Type				Material					Surface Treatment	Accessories
	Support Unit Main Body	Support Unit Stop Plate Set	Compact Position Indicator Mount Set	Large Position Indicator Mount Set	1 Main Body	2 Stop Plate Set	3 Collar	4 Bearing Nut	5		
Not included	MTWZ	MTWZ-S	MTWZ-CP	MTWZ-LP	1045 Carbon Steel	1018 Carbon Steel	1018 Carbon Steel	1018 Carbon Steel	Black Oxide		Clamp Lever
Included	MTWZ-SET	MTWZ-S-SET	MTWZ-CP-SET	MTWZ-LP-SET							

Uses two preload-adjusted JIS Class 0 Radial Bearings.

Lead Screw Support Unit Main Body MTWZ

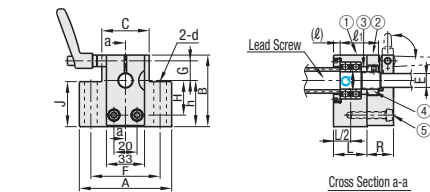


Number	Part Name	Quantity
1	Support Unit Main Body	1
2	Stop Plate Set	1
3	Collar	1
4	Bearing Nut (w/ Thread Protector)	1
5	Hex Socket Head Cap Screw	2

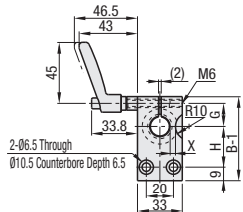
Stop Plate Set



Stop Plate Set MTWZ-S



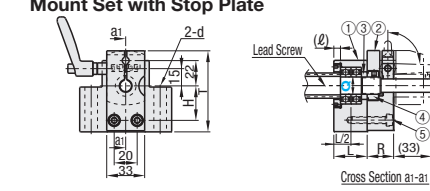
Drawing for MTWZ-S Stop Plate Set only



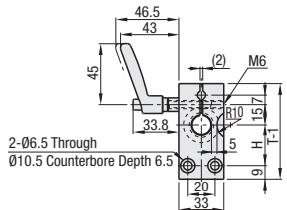
Compact Position Indicator Mount Set



Compact Position Indicator Mount Set with Stop Plate MTWZ-CP



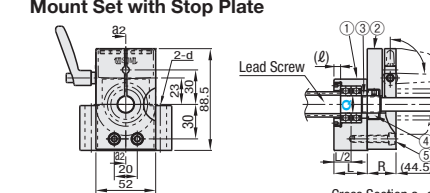
MTWZ-CP Drawing for Stop Plate Set only



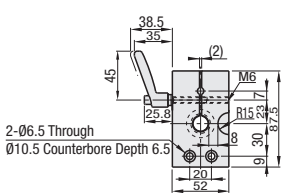
Large Position Indicator Mount Set



Large Position Indicator Mount Set with Stop Plate MTWZ-LP (Q12, 15)



MTWZ-LP Drawing for Stop Plate Set only



A collar for the clamp lever is not included with Q8. The clamp lever mounting dimensions will be the same as the Large Type.
Do not use without inserting the screw shaft (empty tightening). It may deform, causing it to be unusable.

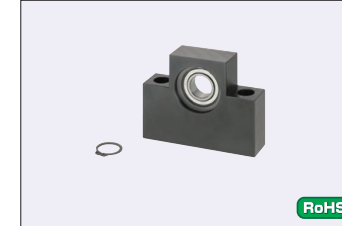
Part Number Type	Q	A	B	C	F	h	J	H	G	T	L	R	(l)	X	d	E	(l1)	Bearing Nut	Clamp Lever	Bearing Type	Allowable Axial Load (N)
MTWZ (-SET)	8	52	48	25	38	30	35	20	13	60.5	22	22		4.5	6.6	6	24	BNR8	CLDM6-32-M	608ZCZNM	1300
MTWZ-S (-SET)	10	70	53	36	52	35	34	25	13	65.5	24	23	4.8	4.5	9	8	27	BNR10		6000ZCZNM	2300
MTWZ-CP (-SET)	12	70	58	36	52	40	39	30	13		24	23		4.5		10	27	BNR12	CLDM6-40-M	6001ZCZNM	2600
MTWZ-LP (-SET)	15	80	62	41	60	40	39	30	17	70.5	27	25	5.8	5.5	11	12	31	BNR15		6002ZCZNM	2900

Ordering Example: Part Number MTWZ15, MTWZ-CP15-SET

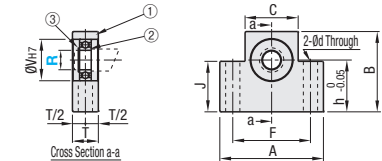
Days to Ship: Configure Online

Price: Configure Online

Part Number Type	Q	Unit Price	Unit Price	Unit Price	Unit Price	Unit Price	Unit Price	Unit Price	Unit Price
MTWZ (-SET)	8								
MTWZ-S (-SET)	10								
MTWZ-CP (-SET)	12								
MTWZ-LP (-SET)	15								



Type	Material	Surface Treatment
MTUZ	1045 Carbon Steel	Black Oxide



Number	Part Name	Quantity
1	Housing	1
2	Radial Bearing	1
3	Retaining Ring for Shaft (Included)	1

Part Number	Type	R	A	B	C	F	h	J	V	T	d	Bearing Type	Retaining Ring for Shaft	MTUZ Unit Price	Volume Discount Rate
MTUZ	8	52	48	25	38	30	35	22		20	6.6	B608ZZ	NETW5	1-4 pc(s).	5-10 pcs.
	10	70	53	36	52	35	34	26			9	B6000ZZ	STWN10		
	12	70	58	36	52	40	39	28			9	B6001ZZ	STWN12		
	15	80	62	41	60	40	39	32			11	B6002ZZ	STWN15		

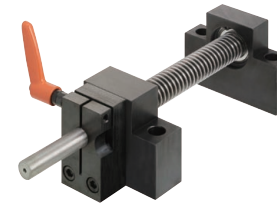
Ordering Example: Part Number MTUZ15

Days to Ship

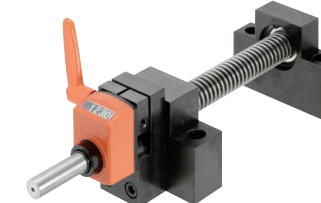
Configure Online

Example

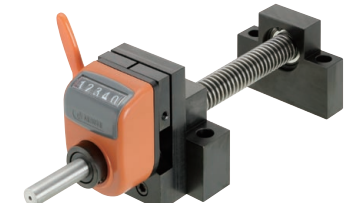
Stop Plate Set Type



Compact Position Indicator Mount Type



Large Position Indicator Mount Type



Position Indicators P.701

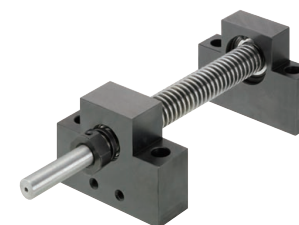
Easy Assembly Design Dimensions Table

Type	Lead Screw		Lead Screw Support Units				Position Indicator Compact / Large		
	Shaft Dia. D	Pitch P	Fixed Side Type	Bearing I.D. Q	Support Side Type	Bearing I.D. R	Type	Spindle Pitch	Alterations
MTW(L/K) MTWB(L/K) RTW(L/K) MTSW(L/K)	12	2	MTWZ MTWZ-S MTWZ-CP MTWZ-LP	8	MTUZ	8	D-----	2	-CSE6
	14	3		10		3		-CSE8	
	16	3		12		4		-CSE10	
	18	4		15		4		-CSE10	
	20	4				5		-CSE12	
22	5		5	-CSE12					
25	5								

*For Large Position Indicator, Spindle Pitch 2 cannot be selected.

Precaution for Use: Use the position indicators within maximum rotational speed. P.701, 702

Support Unit Mounting Procedure



- Insert the lead screw shaft into the fixed side support unit.
- After slipping a collar on, thread the included bearing nut on and temporarily tighten at 1/3 of the specified tightening torque. Mount the support side unit on the support end of the shaft and mount.
- While rotating the screw shaft, gradually tighten the bearing nut to obtain smooth motion from end to end.
- When smooth motion is obtained, tighten to full tightening torque to finish.

M	Nut Tightening Torque (N-cm)	Part Number
8	490	BNR8
10	930	BNR10
12	1370	BNR12
15	2350	BNR15

Value is for reference only.