

Post Clamps

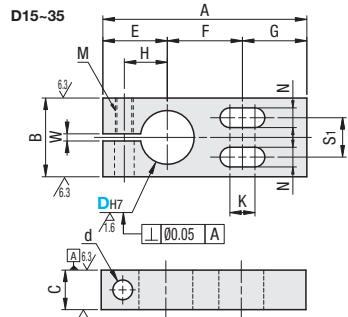
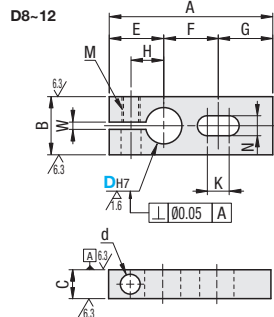
Slotted Hole / L-Shaped

Slotted Hole

RoHS

Type	Material	Surface Treatment	Accessories
KMCU	1018 Carbon Steel	Black Oxide	Hex Socket Head Cap Screw
MMCU	1018 Carbon Steel	Electroless Nickel Plating	
AMCU	6063 Aluminum Alloy	Black Anodize	
SMCU	304 Stainless Steel	-	

6.3 / (6.3 / 1.6)



Part Number Type	DH7	A	B	C	E	F	G	H	K	M	N	S1	d	W	Unit Price		Included Screw	Unit Price		Included Screw									
															KMCU	AMCU		MMCU	SMCU										
KMCU MMCU AMCU SMCU	8	+0.015	42	12	8	14	14	8	8.5	M5	5.5	-	-	2			CB5-10, 1pc.			SCB5-10, 1pc.									
	10	0	45	16	9	15	15	9	9.5													CB5-15, 1pc.			SCB5-15, 1pc.				
	12	+0.018	49	16	9	16	17	16	10						10.5										SCB5-15, 1pc.				
	15	0	57	22	12	18	21	18	12						12.5			11							SCB5-20, 1pc.				
	20	+0.021	69	28	16	22	25	22	15						15.5	M6	6.5	14	6.6						SCB6-25, 1pc.				
	25	0	83	32	19	25	33	25	18						18.5							16							SCB6-30, 1pc.
	30	+0.025	95	40	19	29	37	29	21						20							20							SCB8-35, 1pc.
35	0	104	45	22	32	40	32	24	23	M8	9	22	9							SCB8-40, 1pc.									
																								SCB8-40, 1pc.					

DH7 tolerance is before the slit machining. For mating, g6, f8 shaft tolerances are recommended. Use of a long wrench is recommended for fastening.

L-Shaped

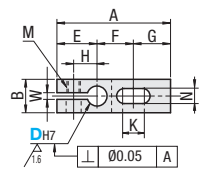
RoHS

Type	Material	Surface Treatment	Accessories
KLQK	1018 Carbon Steel	Black Oxide	Hex Socket Head Cap Screw
MLQM	1018 Carbon Steel	Electroless Nickel Plating	
ALQA	6063 Aluminum Alloy	Black Anodize	
SLQS	304 Stainless Steel	-	

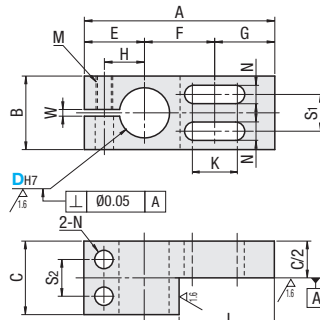
6.3 / (1.6 / 1.6)



D10-12



D15-30



Included Screw

D	KLQK ALQA	MLQM SLQS
10	CB5-25, 1pc.	SCB5-25, 1pc.
12	CB5-30, 1pc.	SCB5-30, 1pc.
15	CB5-35, 2pcs.	SCB5-35, 2pcs.
20	CB6-35, 2pcs.	SCB6-35, 2pcs.
25	CB6-35, 2pcs.	SCB6-35, 2pcs.
30	CB8-40, 2pcs.	SCB8-40, 2pcs.

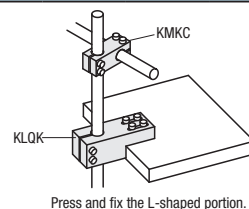
Part Number Type	DH7	A	B	C	E	F	G	H	J	K	M	N	S1	S2	W	Unit Price								
																KLQK	MLQM	ALQA	SLQS					
KLQK MLQM ALQA SLQS	10	+0.015	45	16	16	15	15	9	22.5	9.5	M5	5.5	-	-	2									
	12	+0.018	49	16	16	16	17	16	10	24.5						10.5								
	15	0	57	22	22	18	21	18	12	28.5						12.5			11	11				
	20	+0.021	69	28	28	22	25	22	15	34.5						15.5			14	14				
	25	0	83	32	32	25	33	25	18	41.5						18.5	M6	6.5	16	16				
	30	+0.021	95	40	40	29	37	29	21	47.5						20					M8	9	20	20

The tolerance and perpendicularity of DH7 is before slitting. For mating, g6, f8 shaft tolerances are recommended. Use of a long wrench is recommended for fastening.

Ordering Example: Part Number MLCU15, Days to Ship, Configure Online

Price: Configure Online

Example



Press and fix the L-shaped portion.

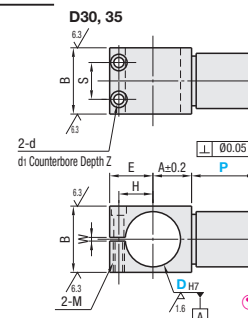
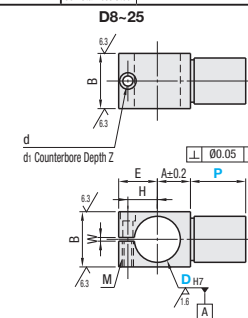
Feature: Combined with Post Clamps, mounted posts can be adjusted in a circumferential direction.

Post Clamps

RoHS

Type	Material	Surface Treatment	Accessories
KLKA	1018 Carbon Steel	Black Oxide	Hex Socket Head Cap Screw
MKA	1018 Carbon Steel	Electroless Nickel Plating	
ALKA	6063 Aluminum Alloy	Black Anodize	
SLKA	304 Stainless Steel	-	

6.3 / (6.3 / 1.6)



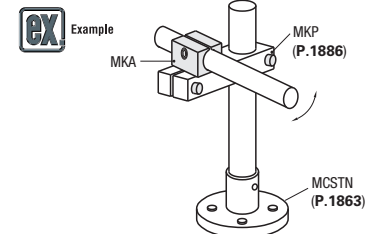
For P Dimension 50 or more, a centering hole may remain at the end of D1.

Part Number Type	DH7	P	D1g6	A	B	E	H	M	d	d1	Z	S	W	Included Screw	Unit Price				
															KLKA	MKA	ALKA	SLKA	
KLKA MKA ALKA SLKA (D<=30)	8	+0.015	12 30 50	8	-0.005	7	12	10.5	7	M3	3.5	6	3	CB3-8, 1pc. CB4-8, 1pc. CB4-10, 1pc. CB4-15, 1pc. CB4-20, 1pc. CB5-25, 1pc. CB5-30, 2 pcs. CB5-35, 2 pcs.					
	10	0	13 30 50	10	-0.014	9	13	13	9	M4	4.5	7.5	4						
	12	+0.018	19 30 50	12	-0.006	11	15	14.5	10										
	15	0	25 50 70	15	-0.017	12	19	15	10.5										
	20	+0.021	30 50 70	20	-0.007	15	25	17.5	13										
	25	0	35 50 70	25	-0.020	18	30	21	16										
	30	+0.025	40 70 90	30	-0.009	21	36	23.5	18.5	M5	5.5	9	5		20				
35	0	40 70 90	35	-0.025	24	40	26.5	21										24	

D Dimension for SLKA is available up to 30. DH7 tolerance is before the slit machining. For mating, g6, f8 shaft tolerances are recommended. Use of a long wrench is recommended for fastening.

Ordering Example: Part Number MKA10, Days to Ship, Configure Online

Price: Configure Online



Feature: Bar Clamps can be used as a guide handle in combination with Post Clamps.

Bar Clamps

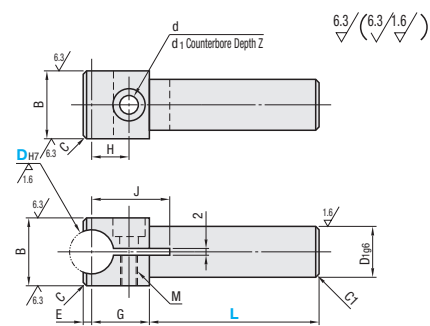
RoHS

Type	Material	Surface Treatment	Accessories
BCLB	1018 Carbon Steel	Black Oxide	Hex Socket Head Cap Screw
BCLM	1018 Carbon Steel	Electroless Nickel Plating	
BCLA	6063 Aluminum Alloy	Black Anodize	
BCLS	304 Stainless Steel	-	

Included Screw: Black oxide and black anodize products have screw of same surface treatment, and electroless nickel plating and Stainless Steel products have stainless screw.

Included Screw

D	Screw Size
6	M3-8
8	M4-8
10	M5-10
12	M5-10
13	M5-15
15	M6-15
16	M6-15
20	M6-20



For L Dimension 50 or more, a centering hole may remain at the end of D1.

Part Number Type	DH7	L	B	D1g6	G	E	C	H	M	d	d1	Z	J	Unit Price												
														BCLB	BCLM	BCLA	BCLS									
BCLB BCLM BCLA BCLS	6	+0.012	25	40	12	8	-0.005	14	1	1	8	M3	3.4	6.5	3.5	17										
	8	0			14	10	-0.014	15	1.5								9	M4	4.5	8	4.5	19				
	10	+0.015			16	12		16	2								10					22				
	12	0			18	12	-0.006	17	2.5								11	M5	5.5	9.5	5.5	24				
	13	+0.018			20	15	-0.017	17	2.5								11					27				
	15	0			23	16		19	2.5								12					31				
	16	0			25	20	-0.007	20	3								13	M6	6.6	11	6.5	34				
	20	+0.021			30	20	-0.020	21	3								14					35				

DH7 tolerance is before the slit machining.

Ordering Example: Part Number BCLB16, Days to Ship, Configure Online

Price: Configure Online

Price: Configure Online