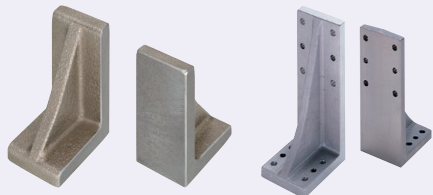


# Angle Plates

Cast Iron, Dimension Fixed

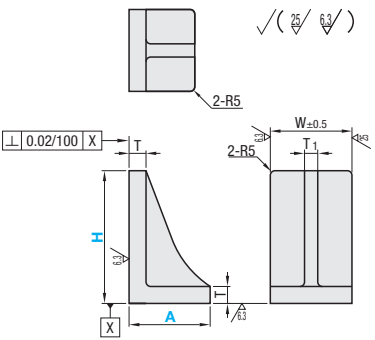


RoHS

Type	Hole Machining	Material	Surface Treatment
IK	FB (Without Hole)	Cast Iron Class No.35	Primer Coating (Gray)
BIK	D (Through Holes)		Black Oxide
MIK	DM (Through Hole Diameter Selectable Type)		Electroless Nickel Plating
	K (Through Holes and Dowel Holes)		

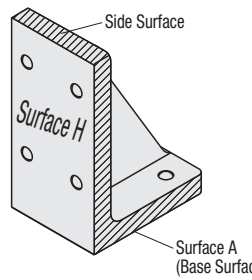
\*BIKDM and MIKDM are not selectable.  
\*1. Surface treatment is not applied to the machined surfaces and holes.

### Hole Machining Selection FB (Without Hole)

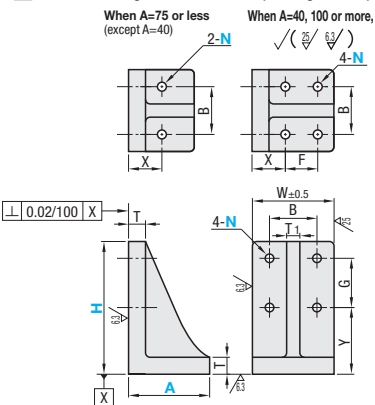


Part Number	Type	H	Angle Plate Body			Unit Price Without Hole				
			A	W	T	T1	IKFB	BIKFB	MIKFB	
Without Hole	IKFB BIKFB MIKFB	60	40	30	8	6				
		40	30	8	6					
		50S	50							
		50	100	15	14					
100		50	50							
		70	100							
		75	75	15	14					
		100	100							
150		75	75							
		100	100							
		200	75	15	14					
		250	120							
200		300	150							
		350	150							
		400	150							

\*1 Surface treatment is not applied on milled surfaces (H, A, and Sides) and hole machined surfaces.



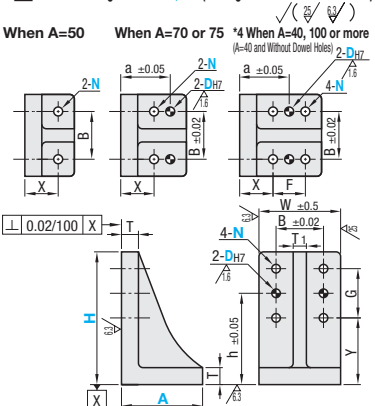
### Hole Machining Selection D, DM (Through Holes)



Part Number	Type	H	Angle Plate Body			Through Hole						Unit Price			
			A	W	T	T1	N	N	B	X	F	Y	G	Through Hole Diameter Fixed	Through Hole Diameter Selectable
Without Hole	IKD BIKD MIKD	60	40	30	8	6	3.5	-	20	15	15	30	20		
		40	30	8	6	3.5	-	20	15	15	30	20			
		50S	50						30	35	-	45	40		
		50	100	15	14	11			70	45	40	45	40		
100	IKDM MIKDM	50	50					30	35	-	75	60			
		70	100					70	40	-	75	60			
		75	75	15	14	11	10	12	14						
		100	100						50	40	-	110	70		
150		250	120					50	50	140	90				
		300	150					70	50	190	90				
		350	150					70	40	230	100				
		400	150					70	40	260	120				

\*2. Select N for Through Hole Diameter Selectable Types, IKDM and MIKDM.  
\*Portions without specific dimensions are same as FB (Without Hole Type).

### Hole Machining Selection K, KM (Through Holes and Dowel Holes)

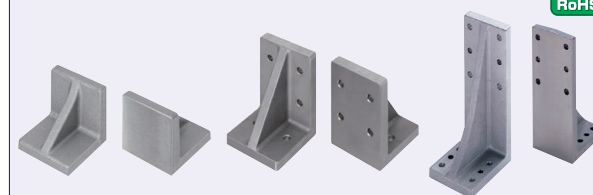


Part Number	Type	H	Angle Plate Body			Through Hole						Dowel Hole		Unit Price					
			A	W	T	T1	N	N	B	X	F	Y	G	DH7	DH7	a	h	Through Hole and Dowel Hole Diameter Fixed	Through Hole and Dowel Hole Diameter Selectable
Without Hole	IKK BIKK MIKK	60	40	30	8	6	3.5	-	20	15	15	30	20	3	-	-	40		
		40	30	8	6	3.5	-	20	15	15	30	20	3	-	-	70			
		50S	50						30	35	-	45	40	6			65		
		50	100	15	14	11			70	45	40	45	40	10			65		
100	IKKM BIKKM	50	50					30	35	-	75	60	10			65			
		70	100					70	40	-	75	60	10			65			
		75	75	15	14	11	10	12	14							65			
		100	100						50	40	-	110	70	10			145		
150		250	120					50	50	140	90					185			
		300	150					70	50	190	90					235			
		350	150					70	40	230	100					280			
		400	150					70	40	260	120					320			

\*3. Select N and DH7 for Through Hole and Dowel Hole Diameter Selectable Types, IKKM and BIKKM.  
\*4. When A=40, Dowel Hole is not provided on Base Surfaces (Side A).  
\*Portions without specific dimensions are same as FB (Without Hole Type).

# Angle Plates

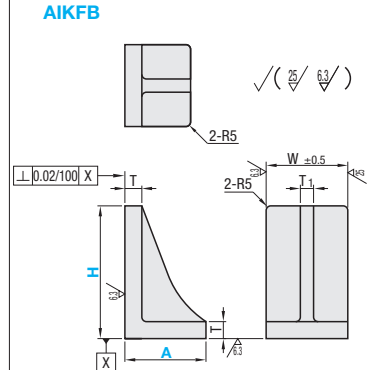
Aluminum / Stainless Steel / Dimension Fixed



RoHS

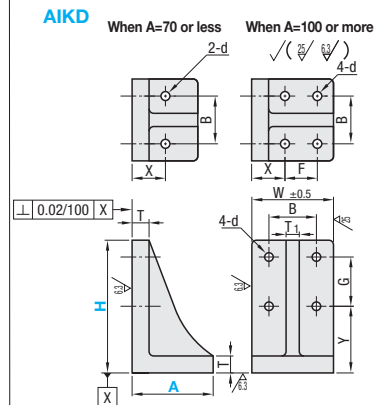
Type	Hole Machining Selection	Material
AIK	FB (Without Hole) D (Through Holes) K (Through Holes and Dowel Holes)	(W=60) Aluminum Casting Alloy 356.0-T5 (W=100) Aluminum Casting Alloy 514.0

### Hole Machining Selection FB (Without Hole)



Part Number	Type	H	A	W	T	T1	Unit Price
AIKFB		60	60	60	10	10	
		70	60	60	10	10	
		80	60	60	10	10	
		90	60	60	10	10	
100		50	100	15	14		
		60	60	10	10		
		100	100	15	14		
		150	100	15	14		
150		200	120	100	15	14	
		250	120	100	18	15	
		300	150	100	18	15	
		350	150	100	18	15	
400	150	100	18	15			

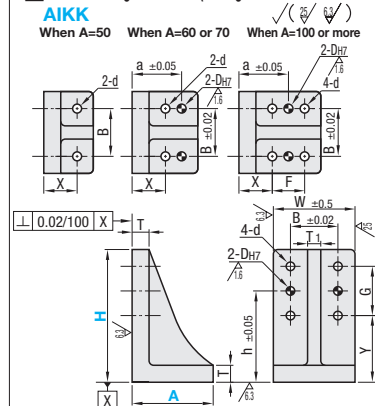
### Hole Machining Selection D (Through Holes)



Part Number	Type	H	Angle Plate Body			Through Hole						Unit Price	
			A	W	T	T1	d	B	X	F	Y		G
Without Hole	AIKD	60	60	60	10	10	6.5	35	30	-	25	25	
		70	60	60	10	10	6.5	35	30	-	30	30	
		80	60	60	10	10	6.5	35	30	-	35	30	
		90	60	60	10	10	6.5	35	30	-	35	35	
100		50	100	15	14	11	70	35	-	45			
		60	60	10	10	6.5	35	30	-	40	40		
		100	100	15	14	11	70	45	40	45			
		150	100	15	14	11	70	40	-	75	60		
150		200	120	100	15	14	11	70	50	50	110	70	
		250	120	100	18	15	11	70	50	50	140	90	
		300	150	100	18	15	11	70	50	50	190	90	
		350	150	100	18	15	11	70	40	90	230	100	
400	150	100	18	15	11	70	40	90	260	120			

\*Portions without specific dimensions are same as AIKFB (Without Hole Type).

### Hole Machining Selection K (Through Holes and Dowel Holes)



Part Number	Type	H	Angle Plate Body			Through Hole						Dowel Hole		Unit Price	
			A	W	T	T1	d	B	X	F	Y	G	DH7		a
Without Hole	AIKK	60	60	60	10	10	6.5	35	30	-	25	25			37.5
		70	60	60	10	10	6.5	35	30	-	30	30	6	45	42.5
		80	60	60	10	10	6.5	35	30	-	30	30	6	45	50
		90	60	60	10	10	6.5	35	30	-	35	35	6	45	52.5
100		50	100	15	14	11	70	35	-	45			10	-	65
		60	60	10	10	6.5	35	30	-	40	40	6	45	60	
		100	100	15	14	11	70	45	40	45			10	65	65
		150	100	15	14	11	70	40	-	75	60	10	75	105	
150		200	120	100	15	14	11	70	50	50	110	70	10	75	145
		250	120	100	18	15	11	70	50	50	140	90	10	75	185
		300	150	100	18	15	11	70	50	50	190	90	10	75	235
		350	150	100	18	15	11	70	40	90	230	100	10	85	280
400	150	100	18	15	11	70	40	90	260	120	10	85	320		

\*Portions without specific dimensions are same as AIKFB (Without Hole Type).

Ordering Example: Part Number - A - N - D  
IKFB350 - 150 - N10  
IKDM100 - 100 - N12 - D8

Days to Ship [Configure Online](#)

Price [Configure Online](#)

Ordering Example: Part Number - A  
AIKFB70 - 60

Days to Ship [Configure Online](#)

Price [Configure Online](#)