


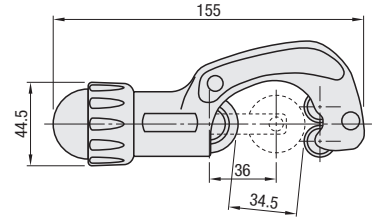
# Cutters / Replacement Cutter Blades / Deburring Tools / Replacement Blades

# How to Calculate Pipe Dimension

## Metal Joints / Plastic Joints

**Cutters**

**PFCAT PFCATS**

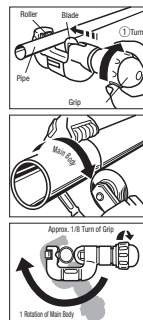



Reinforced aluminum pipe frames and factory frames cannot be cut with this cutter.

Part Number	Applicable Frame	Mass (g)	Unit Price (1 ~ 9 pc(s))	Volume Discount Rate (10~19)
PFCAT	Aluminum Extruded Pipe Frame / Plastic Coated Pipe Frame	350		
PFCATS	Stainless Steel Pipe Frame	356		

**How to Use**

1. Rotate the grip and place the pipe between the cutter blade and the rollers. Be sure that the pipe protrudes more than the width of the rollers.
2. Turn the grip further 1/4 rotation in the arrow direction in the diagram after the blade contacts the pipe, then rotate the pipe once to cut along the circumference.
3. Then turn the grip slowly (approx. 1/8 turn per each body rotation) to cut gradually deeper and turn the main body to completely cut the pipe.
  - \* If the cutting speed is too fast, it may cause pipe deformation, or shorten the blade's service life.



**Caution**

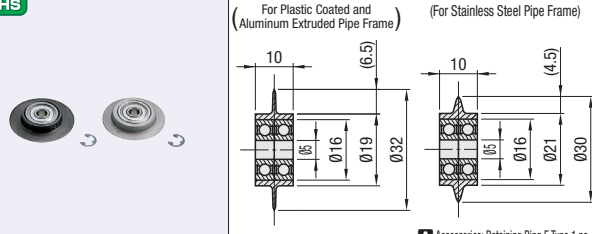
- If the cutter is used to cut the unspecified objects or for the unspecified purpose except cutting, which may damage the cutter or cause the accidents.
- Be sure to inspect the cutter before use. Do not use until it is repaired or replaced when it is out of order.
- Do not touch the blade while cutting. It may cause injuries.
- Be careful of falling while carrying or operating.
- If the cutter becomes wet, be sure to wipe it dry. If water gets into the bearing, rust will prevent the bearing from functioning.

**Replacement Blades**

**RoHS**

**PFCATH** (For Plastic Coated and Aluminum Extruded Pipe Frame)

**PFCATHS** (For Stainless Steel Pipe Frame)



Accessories: Retaining Ring E Type 1 pc.

Part Number	Mass (g)	Unit Price (1 ~ 9 pc(s))	Volume Discount Rate (10~19)
PFCATH (For Plastic Coated and Aluminum Extruded Pipe Frame)	19		
PFCATHS (For Stainless Steel Pipe Frame)	25		

For orders larger than indicated quantity, please request a quotation.  
 How to Replace Replacement Blades: Remove the retaining ring E Type of the cutter body, then pull installation pin for replacement.




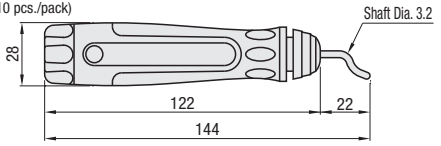
Part Number  
**PFCAT PFCATH**

Configure Online

**Deburring Tools / Replacement Blades**

**RoHS**

**M-NG1000-F** (Deburring Tool: PFREMH-BS1010x1 pc.)  
**M-NG1000-S** (Deburring Tool: PFREMH-BS1018x1 pc.)  
**PFREMH-BS1010** (Replacement Blades, 10 pcs./pack)  
**PFREMH-BS2010** (Replacement Blades, 10 pcs./pack)  
**PFREMH-BS1018** (Replacement Blades, 10 pcs./pack)

Material: Handle: Plastic + Rubber

**Deburring Tools**

Part Number	Mass (g)	Unit Price (1 ~ 9 pc(s))	Volume Discount Rate (10~29)
M-NG1000-F	31		
M-NG1000-S	31		

For orders larger than indicated quantity, please request a quotation.

**Replacement Blades**

Part Number	No.	Feature	Unit Price* (1 ~ 9 pc(s))	Volume Discount Rate (10~29)
PFREMH	BS1010	For milling steel and aluminum. One sided blade used in clockwise rotation. Black.		
	BS2010	For cast iron, brass and plastic. Double sided blade used in both directions. Silver.		
	BS1018	For hard-cutting material such as stainless steel. One sided blade used in clockwise rotation. Silver.		

\* One set contains 10 pieces. For orders larger than indicated quantity, please request a quotation.



Part Number  
**M-NG1000-F PFREMH-BS1010**

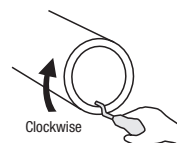
Configure Online

**CAUTION**

- Use for purposes other than deburring may cause damages or accidents.
- Be sure to check the deburring tool before use. Do not use until it is repaired or replaced when it is out of order.
- Do not touch blade section during operation.
- The P/N PEREM has been changed to M-NG1000-F. The handle shape is slightly different but the functionality is the same.

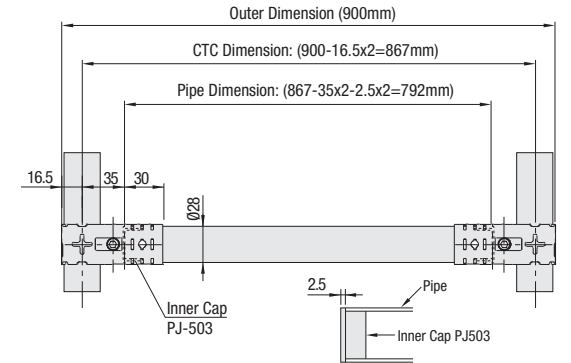
**How to Use**

1. Hold the grip and apply the blade to the inside of the frame.
2. Turn at least one full turn while keeping the blade in the direction of the frame.



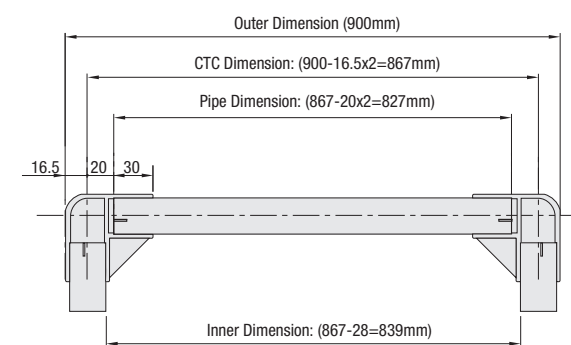
**Example of Metal Joint Calculation**  
 When using PBLSN1

- \*CTC Dimension =  $900 - 16.5 \times 2 = 867$   
 = Outer Dimension - Metal Joint Radius x2
- Pipe Dimension =  $867 - 35 \times 2 - 2.5 \times 2 = 792$   
 = CTC Dimension - Length From Metal Joint Center to Pipe End
- \*When rust preventing inner caps are used, the pipe will be shorter (2.5 x 2)  
 No inner cap is required for aluminum extruded pipe frame.
- \*CTC = Center to Center



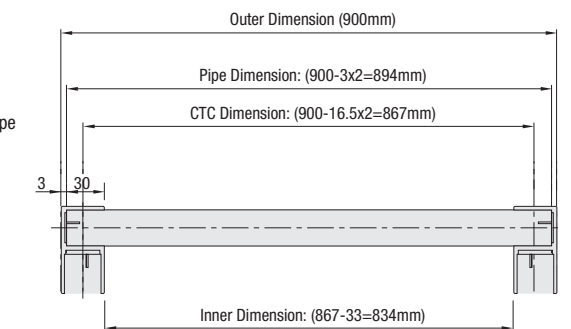
**Example of Plastic Joint Calculation**  
 When using PJ002

- \*Aluminum extruded pipe frames and stainless steel pipe frames should not be combined with plastic joints.
- CTC Dimension =  $900 - 16.5 \times 2 = 867$   
 = Outer Dimension - Plastic Joint Radius x2
- Pipe Dimension =  $867 - 20 \times 2 = 827$   
 = CTC Dimension - Length from Plastic Joint Center to Pipe End



**When using PJ003**

- CTC Dimension =  $900 - 16.5 \times 2 = 867$   
 = Outer Dimension - Metal Joint Radius x2
- Pipe Dimension =  $900 - 3 \times 2 = 894$   
 = Outer Dimension - Plastic Joint ends to the Pipe ends



**When using PJ401, PJ404 or PJ409**

- Inclined CTC Dimension =  $900 \times \sqrt{2} \approx 1272$   
 = Tube CTC Horizontal Dimension x  $\sqrt{2}$
- Inclined Pipe Dimension =  $1272 - 35 \times 2 = 1202$   
 = Inclined CTC Dimension - Length from Plastic Joint Center to Pipe End

