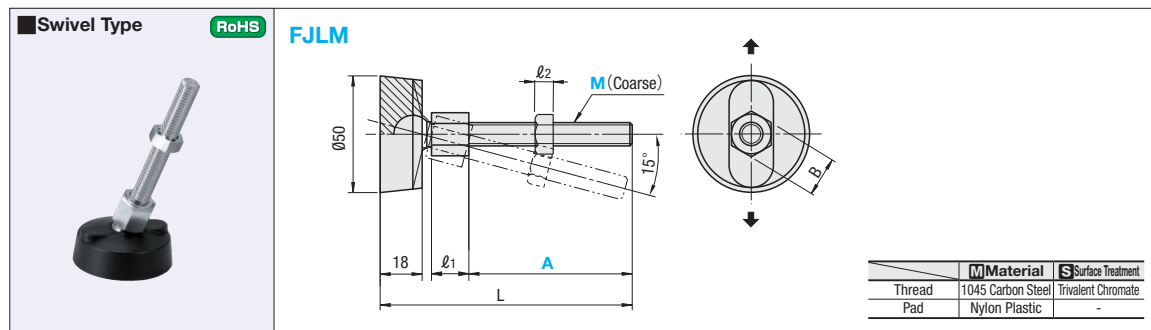


Leveling Mounts

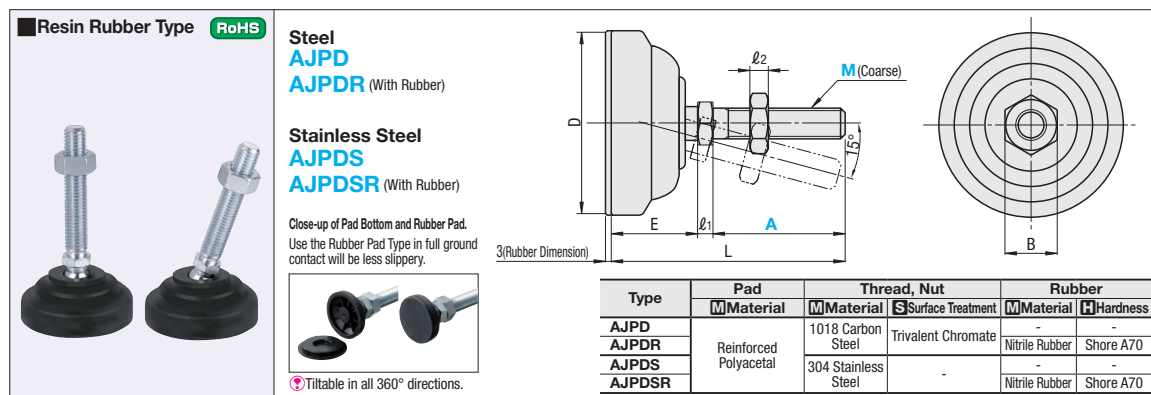
Swivel Type / Resin Rubber Base Type



Part Number Type	M-A	L	ℓ1	ℓ2	B	Allowable Vertical Load (kN)	Mass (g)	Unit Price
10-70	100	8	8	17	0.21	21		
10-100	130					23		
12-60	92	10	10	19	0.14	39		
12-70	102					41		
12-100	132					44		
16-80	115	13	13	24	0.32	63		
16-100	135					67		
16-130	165					75		

Ordering Example: **Part Number** FJLM10-100

Days to Ship: **Configure Online**



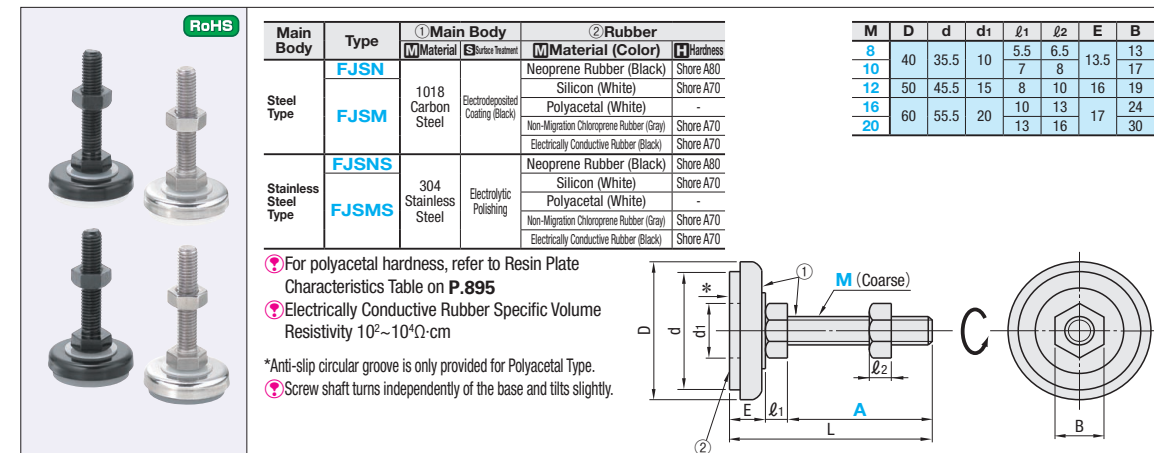
Part Number Type	M-A	L	D	ℓ1	ℓ2	E	B	Allowable Vertical Load (kN)	Mass (g)	Unit Price			
										AJPD	AJPDR	AJPDS	AJPDSR
10-70C	95	40	6	8	19	17	3.0	76					
10-100C	125							79					
12-70C	98	50	7.5	10	20	19	3.0	108					
12-100C	128							110					
16-100C	130	60	10	13	24	24	6.0	130					
10-70D	96	40	6	8	20	17	3.0	182					
10-100D	126							185					
12-60D	89.5	50	7.5	10	21.5	19	3.0	200					
12-70D	99.5							210					
12-100D	129.5	60	7.5	10	26	19	3.0	220					
16-80D	111.5							265					
16-130D	161.5							280					
12-70E	104	40	7.5	10	19	19	3.0	260					
12-100E	134							265					
16-70E	106	50	7.5	10	26	19	3.0	290					
16-100E	136							295					
16-150E	186							300					
20-100E	139	60	10	13	24	24	6.0	320					
20-150E	189							342					
20-180E	219							356					

Ordering Example: **Part Number** AJPD12-100C

Price: **Configure Online**

Days to Ship: **Configure Online**

Rubber Base Leveling Mounts



- For polyacetal hardness, refer to Resin Plate Characteristics Table on P.895
- Electrically Conductive Rubber Specific Volume Resistivity 10²~10⁴Ω·cm
- *Anti-slip circular groove is only provided for Polyacetal Type.
- *Screw shaft turns independently of the base and tilts slightly.

Part Number Type	M-A	FJSM Rubber Material	L	Allowable Vertical Load (kN)	Mass (g)	Unit Price			
						FJSN	S (Silicon)	P (Polyacetal)	C (Chloroprene)
FJSN FJSM (Rubber Selectable)	8-60		79	4.0	80				
	10-50		70.5	4.0	110				
	10-75		95.5		135				
	12-70	S (Silicon, White)	94	4.2	160				
	12-100	P (Polyacetal, White)	124		190				
	16-70	C (Non-migration Chloroprene Rubber, Gray)	97		290				
	16-100	D (Electrically Conductive Rubber, Black)	127		340				
	20-100		130		440				
	20-130		160		510				

*Rubber Type is not selectable for FJSN (neoprene rubber only).

Part Number Type	M-A	FJSMS Rubber Material	L	Allowable Vertical Load (kN)	Mass (g)	Unit Price			
						FJSNS	S (Silicon)	P (Polyacetal)	C (Chloroprene)
FJSNS FJSMS (Rubber Selectable)	8-60		79	4.0	80				
	10-50		70.5	4.0	110				
	12-70	S (Silicon, White)	94	4.2	160				
	16-70	P (Polyacetal, White)	97		290				
	20-100	C (Non-migration Chloroprene Rubber, Gray)	130		440				
	20-130	D (Electrically Conductive Rubber, Black)	160		510				

*Rubber Type is not selectable for FJSMS (neoprene rubber only).

Ordering Example: **Part Number** FJSN12-100 - **Rubber Material** S

Price: **Configure Online**

Days to Ship: **Configure Online**

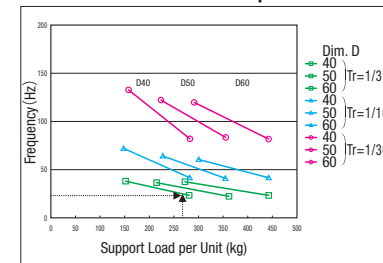
EX Example CPHAL(P.750)

The combination in this example is selectable on the website. Selection Detail **P.81**

*Enter the number in the search box on e-Catalog. The result will be displayed in the "Modular Assembler" area on the right.

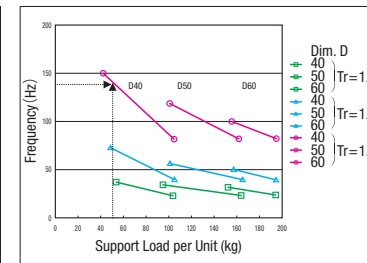
e-Catalog Search Number: #MA654

Antivibration Effect of Neoprene Rubber



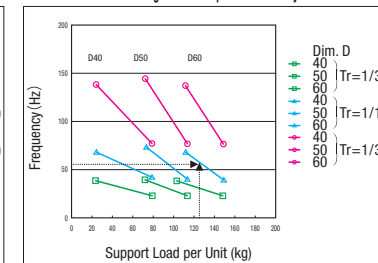
Ex. When FJSN10-75 is selected with 260Kg per-foot supported load, 25Hz or more vibration transmissibility is reduced to one-third or less.

Antivibration Effect of Silicone Rubber



Ex. When FJSN10-75-S is selected with 50Kg per-foot supported load, 140Hz or more vibration transmissibility is reduced to 1/30 or less.

Antivibration Effect of Non-migration Chloroprene / Electrically Conductive Rubber



Ex. When FJSMS16-70-D is selected with 130Kg per-foot supported load, 60Hz or more vibration transmissibility is reduced to 1/10 or less.

*Antivibration data are not available for polyacetal type as it is resin.
*Figures shown above are all calculated values and not guaranteed.