

Low Pressure Steel pipe Fittings

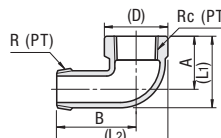
Thread Coated Type

Feature: Male threads are coated. Provides immediate out of the box operation.

Elbows RoHS

Female/ Male

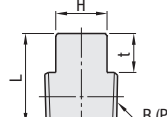
Type	Material	Surface Treatment
SGCEL	FCMB270	Hot Zinc Plating
SUCEL	CF-8 Stainless Steel Cast	-



Allowable temperature: 150°C

Plugs RoHS

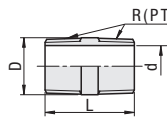
Type	Material	Surface Treatment
SGCPP	FCMB270	Hot Zinc Plating
SUCPP	CF-8 Stainless Steel Cast	-



Allowable temperature: 150°C

Nipples RoHS

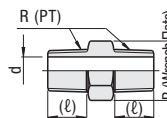
Type	Material	Surface Treatment
SGCNP	SGP	Hot Zinc Plating
SUCNP	304 Stainless Steel	-



Allowable temperature: 150°C

Hex Nipples RoHS

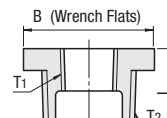
Type	Material	Surface Treatment
SGCNR	FCMB270	Hot Zinc Plating
SUCNR	CF-8 Stainless Steel Cast	-



Allowable temperature: 150°C

Bushings RoHS

Type	Material	Surface Treatment
SGCPB	FCMB270	Hot Zinc Plating
SUCPB	CF-8 Stainless Steel Cast	-



Allowable temperature: 150°C

Part Number	R Rc (PT)	SGCEL				SUCEL				SGCEL		SUCEL		
		(D)	(L1)	(L2)	A	B	(D)	(L1)	(L2)	A	B	Unit Price	Volume Discount Rate	
SGCEL SUCEL	6A	1/8	19	23	36	17	26	14.5	22	33	17	26	1-9 pcs.	10 pcs. -
	8A	1/4	22	26	42	19	30	21	26	41	19	30		
	10A	3/8	27	31	48	23	35	25	32	48	23	35		
	15A	1/2	31	38	56	27	40	29	38	55	27	40		
	20A	3/4	36	45	66	32	47	36	46	65	32	47		
25A	1	45	55	76.5	38	54	44	55	76	38	54			

Part Number	R (PT)	Square Size H	t	L		SGCPP		SUCPP		
				SGCPP	SUCPP	Unit Price	Volume Discount Rate	Unit Price	Volume Discount Rate	
SGCPP SUCPP	6A	1/8	7	7	16	16	1-9 pcs.	10 pcs. -	1-19 pcs.	20-49 pcs.
	8A	1/4	9	8	19	19				
	10A	3/8	12	9	21	21				
	15A	1/2	14	10	26	25				
	20A	3/4	17	11	29	28				
25A	1	19	12	31	31					

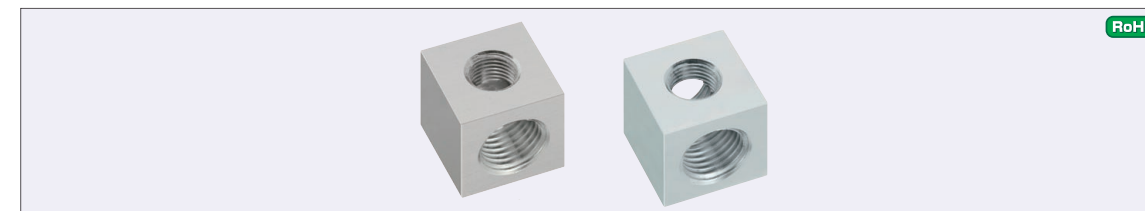
Part Number	R (PT)	D	L	d		SGCNP		SUCNP		
				SGCNP	SUCNP	Unit Price	Volume Discount Rate	Unit Price	Volume Discount Rate	
SGCNP SUCNP	6A	1/8	10.5	24	6.5	6.5	1-9 pcs.	10 pcs. -	1-19 pcs.	20-49 pcs.
	8A	1/4	13.8	26	8.7	9.7				
	10A	3/8	17.3	28	12.1	13.1				
	15A	1/2	21.7	34	15.8	15.5				
	20A	3/4	27.2	38	21.6	21.3				
25A	1	34	42	27.8	28.1					

Part Number	R (PT)	B	L	(l)	d		SGCNR		SUCNR		
					SGCNR	SUCNR	Unit Price	Volume Discount Rate	Unit Price	Volume Discount Rate	
SGCNR SUCNR	8A	1/4	17	34	12	7	7	1-9 pcs.	10 pcs. -	1-19 pcs.	20-49 pcs.
	10A	3/8	21	36	13	9	9				
	15A	1/2	26	42	16	13	13				
	20A	3/4	32	47	18	18	16				
	25A	1	38	52	20	24	22				

Part Number	Rc(PT)	R(PT)	L	B	SGCPB		SUCPB		
					SGCPB	SUCPB	Unit Price	Volume Discount Rate	Unit Price
SGCPB SUCPB	12	1/8	1/4	17	17	1-9 pcs.	10 pcs. -	1-19 pcs.	20-49 pcs.
	13	1/8	3/8	18	21				
	23	1/4	3/8	18	21				
	24	1/4	1/2	21	26				
	34	3/8	1/2	21	26				
	36	3/8	3/4	24	32				
	46	1/2	3/4	24	32				

Thread Conversion Fittings

L-Shaped, T-Shaped

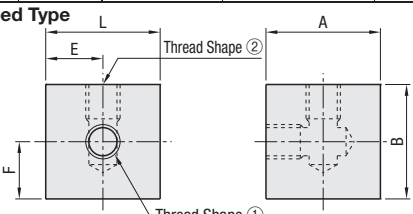


Type	Material	Surface Treatment	Max. Operating Pressure
L-Shaped APBLM	1018 Carbon Steel	Electroless Nickel Plating	20.6MPa
APBLS	304 Stainless Steel	-	-
APBLA	5052 Aluminum Alloy	-	1MPa

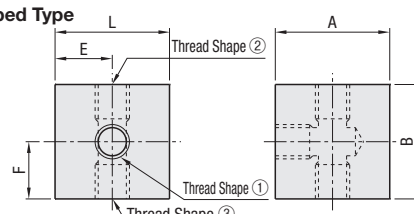
Thread JIS B 0203 R (PT)
JIS B 0202 G(PF): ISO 228-1 Interchangeable
ANSI/ASME B.1.20.1-1983(NPT)

6.3

L-Shaped Type



T-Shaped Type



L-Shaped Type

Part Number	Thread Shape ①	No.	T(PT) G(PF) N(NPT)	Thread Shape ②	No.	T(PT) G(PF) N(NPT)	L	A	B	E	F	Unit Price		
												APBLM	APBLS	APBLA
APBLM (1018 Carbon Steel) APBLS (304 Stainless Steel) APBLA (5052 Aluminum Alloy)	T (PT) G (PF) N (NPT)	1	1/8	-	M5	-	25	25(30)	25(30)	12.5(15)	12.5(15)			
					1	1/8	25	25(30)	25(30)	12.5(15)	12.5(15)			
		2	1/4	30	30	30	15	15						
		2	1/4	30	30	30	15	15						
	T (PT) G (PF) N (NPT)	2	1/4	-	M5	-	30	30	30	15	15			
					1	1/8	30	30	30	15	15			
		2	1/4	35	35(40)	35(40)	17.5(20)	17.5(20)						
		3	3/8	40	40	40	20	20						
T (PT) G (PF) N (NPT)	3	3/8	-	M5	-	40	40	40	20	20				
				2	1/4	40	40	40	20	20				
	3	3/8	40	40	40	20	20							
	4	1/2	50	50	50	25	25							
T (PT) G (PF) N (NPT)	4	1/2	-	M5	-	50	50	50	25	25				
				3	3/8	50	50	50	25	25				
	4	1/2	50	50	50	25	25							
	4	1/2	50	50	50	25	25							

Dimensions in () are applicable to 304 Stainless Steel.

T-Shaped Type

Part Number	Thread Shape ①	No.	T(PT) G(PF) N(NPT)	Thread Shape ②	No.	T(PT) G(PF) N(NPT)	Thread Shape ③	No.	T(PT) G(PF) N(NPT)	L	A	B	E	F	Unit Price		
															APBTM	APBTS	APBTA
APBTM (1018 Carbon Steel) APBTS (304 Stainless Steel) APBTA (5052 Aluminum Alloy)	T (PT) G (PF) N (NPT)	1	1/8	-	M5	-	M5	-	25	25(30)	25(30)	12.5(15)	12.5(15)				
					1	1/8	25	25(30)	25(30)	12.5(15)	12.5(15)						
					2	1/4	30	30	30	15	15						
					2	1/4	30	30	30	15	15						
		T (PT) G (PF) N (NPT)	2	1/4	-	M5	-	30	30	30	15	15					
						1	1/8	30	30	30	15	15					
			2	1/4	35	35(40)	35(40)	17.5(20)	17.5(20)								
			3	3/8	40	40	40	20	20								
	T (PT) G (PF) N (NPT)	3	3/8	-	M5	-	40	40	40	20	20						
					1	1/8	40	40	40	20	20						
					2	1/4	40	40	40	20	20						
					3	3/8	40	40	40	20	20						
		T (PT) G (PF) N (NPT)	4	1/2	-	M5	-	50	50	50	25	25					
						2	1/4	50	50	50	25	25					
			3	3/8	50	50	50	25	25								
			4	1/2	50	50	50	25	25								

Dimensions in () are applicable to 304 Stainless Steel.

Ordering Example: Part Number - Thread Shape ① - Thread Shape ② - Thread Shape ③

APBLM - T1 - T2
APBLA - T1 - M5 - M5

Days to Ship [Configure Online](#)

Price [Configure Online](#)

Ordering Example: Part Number **SGCEL25A** **SGCPP20A**

Days to Ship [Configure Online](#)

For orders larger than indicated quantity, please request a quotation.

Cautions

- Not applicable to steam plumbing.
- Once fittings are used, the function of the thread coating resin is impaired. Thus, Wrap seal tape around fittings before use.