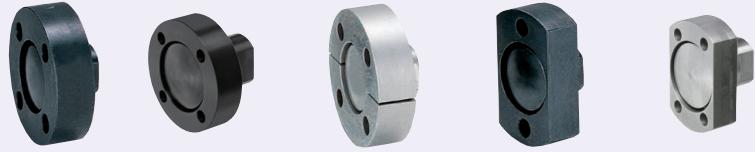


Floating Joints Flange Mounting

Mount Flange and Cylinder Connector Sets

For mount flange and cylinder connector (tapped) only, refer to P.1421 and P.1422 respectively.

Tapped Type

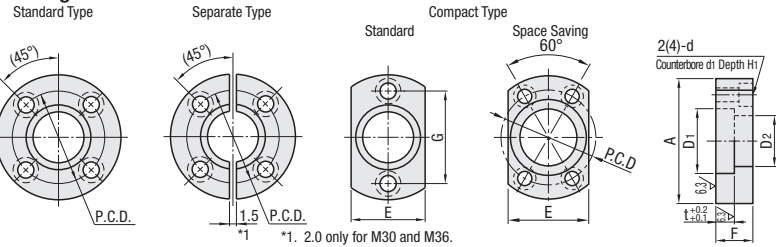


RoHS

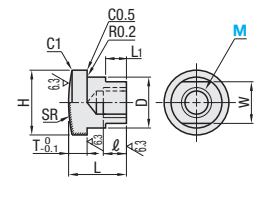
Shape	Type			Mount Flanges			Cylinder Connector		
	Standard	Separate	Compact	Material	Hardness	Surface Treatment	Material	Hardness	Surface Treatment
Standard	FJA	FJB	FJC	1045 Carbon Steel	45-55HRC	Black Oxide	1045 Carbon Steel	45-55HRC	Black Oxide
Space Saving	FJUA	FJUB	FJUC	440C Stainless Steel*	45-55HRC	Black Oxide	440C Stainless Steel*	45-55HRC	Black Oxide
	-	-	FJUCS	420 Stainless Steel Equivalent	-	-	420 Stainless Steel Equivalent	-	-

25 / (6.3 /)

Mount Flanges



Cylinder Connector



Standard Type

Part Number	Mount Flanges										Cylinder Connector											
	Type	M	A	D1	D2	t	F	P.C.D.	d	d1	H1	E	G	MxPitch	ℓ	L	D	H	T	W	L1	SR
Standard FJA FJAS*	3	42	18	13	5	10	30	4.5	8	5	24	30	3x0.5	6	15	12	17	5	10	6	40	
	4												4x0.7	8								
	5	48	20	15	6	12	34	6	9.5	5.5	28	34	5x0.8	10	20	14	19	6	12	8	50	
Separate FJB FJBS*	6	51	24	17	8	16	37	7	11	6	30	37	6x1.0	12	25	16	23	8	14	10	60	
	8	54	28	21	10	20	40	10	14	8	32	40	8x1.25	14	35	25	34	10	22	12	100	
	10	70	36	27	10	20	52	10	14	8	42	52	10x1.25	15	45	32	43	12	27	15	200	
Compact FJC FJCS*	12	90	46	35	12	24	68	12	17.5	10	54	68	12x1.25	18	55	40	52	15	32	18	200	
	14												14x1.5	21	60	49	62	16	41	23	250	
	16												16x1.5	24								
	18												18x1.5	27								
	20												20x1.5	30								
	22	106	56	44	15	30	80	14	20	12	78	86	22x1.5	33								
	24	116	66	53	16	32	86						24x1.5	36								
26	134	74	59	18	40	104	18	26	18	80	104	26x1.5	39									
30													30x1.5	43								
36													36x1.5	45								

* 440C Stainless Steel / 420 Stainless Steel Equivalent Hardened Type may be discolored due to hardening.

Space Saving

Part Number	Mount Flanges										Cylinder Connector											
	Type	M	A	D1	D2	t	F	P.C.D.	d	d1	H1	E	G	MxPitch	ℓ	L	D	H	T	W	L1	SR
Standard FJUA	5	34	17	13	5	11	24	4.5	8	5	22	24	5x0.8	10	17	12	16	5	10	6	50	
	6												6x1.0	12	20	16	22					
	8	40	23	17	6	12	30	6	9.5	5.5	25	30	8x1.25	14	23	16	22					
Separate FJUB	10	52	32	24	5.5	12	40	6	9.5	5.5	34	40	10x1.25	15	25	22	30	5.5	19	10	100	
	12												12x1.25	18	29	22	30					
	14	62	39	31	8	16	48	7	11	6	41	48	14x1.5	21	33	28	36	8	21	12	200	
Compact FJUC FJUCS	16												16x1.5	24	37	32	42	10	26	15		
	18												18x1.5	27	41	38	48	12	32	16		
	20	74	46	36	10	20	58	10	14	8	48	58	20x1.5	30	46	38	48	12	32	16	200	
	22												22x1.5	33	50	48	58	16	36	18	250	
	24	80	52	42	12	24	64	10	14	8	54	64	24x1.5	36	55	48	58	16	36	18	250	
26	90	62	52	16	32	74	14	18	12	64	74	26x1.5	39	60	54	64	18	42	20	250		
30													30x1.5	43	65	48	58	16	36	18	250	

* 420 Stainless Steel Equivalent Hardened Type may be discolored due to hardening.

For Feature of Floating Joint (for Space Saving Type), refer to Backing Plates (P.1424).

M	Unit Price									
	Standard Type					Space Saving				
	FJA	FJB	FJC	FJAS	FJBS	FJCS	FJUA	FJUB	FJUC	FJUCS
3										
4										
5										
6										
8										
10										
12										
14										
16										
18										
20										
22										
24										
26										
30										
36										

Alterations

Part Number - (AWC)
FJMA10 - AWC
Configure Online

Flange Cut

Code AWC

Spec. Cuts four sides of the flange.
Ordering Code AWC
Standard Type only (Not applicable to FJA36, FJMA22)
Space Saving Type. (Not applicable to Space Saving Type.)

M	K
3, 4	32
5, 6	36
8	40
10	42
12, 14	54
16, 18	68
20, 22	80
24, 26	86
30	104

Price Adder

For mount flange and cylinder connector (threaded) only, refer to P.1421 and P.1422 respectively.

Threaded Type

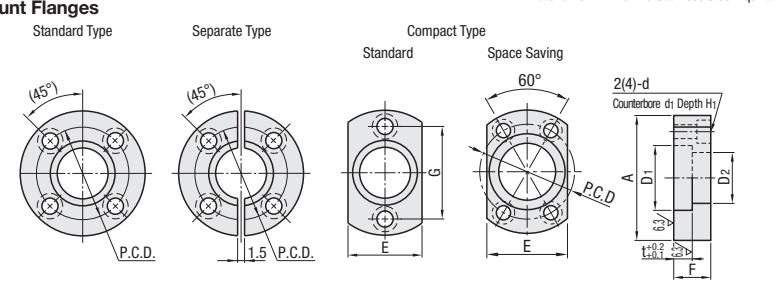


RoHS

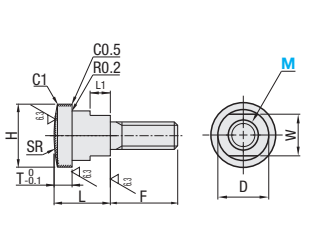
Shape	Type			Mount Flanges			Cylinder Connector		
	Standard	Separate	Compact	Material	Hardness	Surface Treatment	Material	Hardness	Surface Treatment
Standard	FJMA	FJMB	FJMC	1045 Carbon Steel	45-55HRC	Black Oxide	1045 Carbon Steel	45-55HRC	Black Oxide
Space Saving	FJUMA	FJUMB	FJUMCS	440C Stainless Steel	45-55HRC	Black Oxide	440C Stainless Steel	45-55HRC	Black Oxide
	-	-	FJUMCS	420 Stainless Steel Equivalent	-	-	420 Stainless Steel Equivalent	-	-

25 / (6.3 /)

Mount Flanges



Cylinder Connector



Standard Type

Part Number	Mount Flanges										Cylinder Connector												
	Type	M	A	D1	D2	t	F	P.C.D.	d	d1	H1	E	G	MxPitch	F	L	D	H	T	W	L1	SR	
Standard FJMA FJMAS	3	42	18	13	5	10	30	4.5	8	5	24	30	3x0.5	5	14	12	17	5	10	6	40		
	4												4x0.7	6									
	5	48	20	15	6	12	34	6	9.5	5.5	28	34	5x0.8	7	16	14	19	6	12	8	50		
Separate FJMB FJMBS	6	51	24	17	8	16	37	7	11	6	30	37	6x1.0	10	20	16	23	8	14	10	60		
	8	54	28	21	10	20	40	10	14	8	32	40	8x1.25	12	25	16	23	8	17	10	100		
	10	70	36	27	10	20	52	10	14	8	42	52	10x1.5	15	30	20	27						
Compact FJMC FJMCS	12	90	46	35	12	24	68	12	17.5	10	54	68	12x1.75	16	35	25	34	10	22	12	100		
	16												16x2.0	18	40	30	32	43	12	27	15	100	
	20	106	56	44	15	30	80	14	20	12	66	80	20x2.5	25	45	40	52	15	32	18	200		
	22												22x2.5	28									
	24																						

* 440C Stainless Steel / 420 Stainless Steel Equivalent Hardened Type may be discolored due to hardening.

Space Saving

Part Number	Mount Flanges										Cylinder Connector											
	Type	M	A	D1	D2	t	F	P.C.D.	d	d1	H1	E	G	MxPitch	F	L	D	H	T	W	L1	SR
Standard FJUMA	5	34	17	13	5	11	24	4.5	8	5	22	24	5x0.8	10	14	12	16	5	10	3	50	
	6												6x1.0	13								
	8	40	23	17	6	12	30	6	9.5	5.5	25	30	8x1.25	15	15	16	22					
Compact FJUMC FJUMCS	10	52	32	24	5.5	12	40	6	9.5	5.5	34	40	10x1.5	18	20	16	22	5.5	19	4	60	
	12												12x1.75	22	22	22	30	5.5	19			
	16	62	39	31	8	16	48	7	11	6	41	48	16x2.0	30								