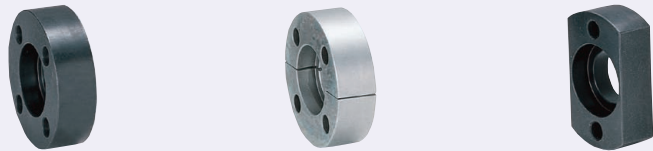


Floating Joints - Flange Mounting

Mount Flange

For a set of Mount Flange and Cylinder Connector, refer to P.1419 and P.1420.

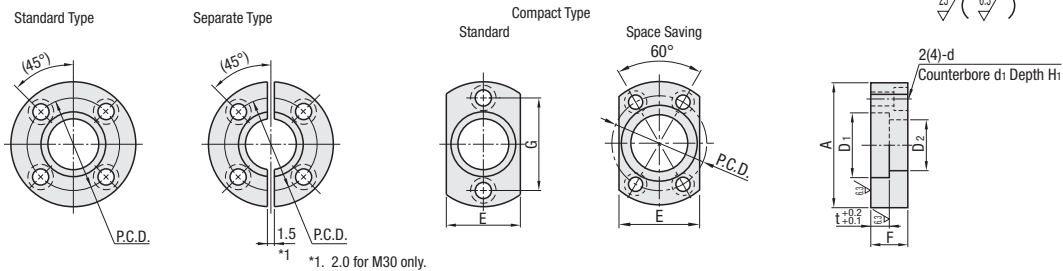
RoHS



Shape	Type			Mount Flanges		
	Standard	Separate	Compact	Material	Hardness	Surface Treatment
Standard	FJA-H FJAS-H	FJB-H FJBS-H	FJC-H FJCS-H	1045 Carbon Steel 440C Stainless Steel*	45-55HRC	Black Oxide
Space Saving	FJUAS-H	FJUBS-H	FJUC-H	1045 Carbon Steel 420 Stainless Steel Equivalent.		Black Oxide

* Material for No.24-30 is 420 Stainless Steel Equivalent.

Mount Flanges



Standard Type

Part Number	Mount Flanges											Unit Price								
	Type	No.	A	D1	D2	t	F	P.C.D.	d	d1	H1	E	G	FJA-H	FJB-H	FJC-H	FJAS-H	FJBS-H	FJCS-H	
Standard	FJA-H FJAS-H	0304	42	18	13	5	10	30	4.5	8	5	24	30							
		0506	48	20	15	6	12	34	6	9.5	5.5	28	34							
Separate	FJB-H FJBS-H	08	51	24	17	8	16	37	7	11	6	30	37							
		10	54	28	21			40				32	40							
Compact	FJC-H FJCS-H	1214	70	36	27	10	20	52	10	14	8	42	52							
		1618	90	46	35	12	24	68	12	17.5	10	54	68							
Space Saving	FJUAS-H	2022	106	56	44	15	30	80				66	80							
		24	116	66	53	16	32	86	14	20	12	78	86							
		26	134	74	59	18	40	104	18	26	18	80	104							

440C Stainless Steel / 420 Stainless Steel Equivalent Hardened Type may be discolored due to hardening. The mount flanges for FJA36, FJB36 and FJC36 are same type as FJA-H30, FJB-H30 and FJC-H30.

Space Saving

Part Number	Mount Flanges											Unit Price			
	Type	No.	A	D1	D2	t	F	P.C.D.	d	d1	H1	E	FJUAS-H	FJUBS-H	FJUC-H
Standard	FJUAS-H	0506	34	17	13		5	11	24	4.5	8	5	22		
		0810	40	23	17		6	12	30	6	9.5	5.5	25		
Separate	FJUBS-H	1214	52	32	24	5.5	12	40	6	9.5	5.5	34			
		1618	62	39	31	8	16	48	7	11	6	41			
Compact	FJUC-H	2022	74	46	36	10	20	58				48			
		2426	80	52	42	12	24	64	10	14	8	54			
		30	90	62	52	16	32	74				64			

420 Stainless Steel Equivalent Hardened Type may be discolored due to hardening. Space Saving Type is a special floating joint for air cylinders.

Ordering Example: Part Number **FJA-H10**, **FJAS-H1214**, **FJA-H10-AWC**

Alterations: [Configure Online](#)

Days to Ship: [Configure Online](#)

Price: [Configure Online](#)

Alteration	Flange Cut	
	Code	AWC
Spec.	Cuts four sides of the flange.	No. K
	(Ordering Code) AWC	0304 32 0506 36 08 40 10 42 1214 54 1618 68 2022 80 24 86 30 104
Price Adder	Applicable to followings only.	
	- FJA-H - FJAS-H10304-2022	

Floating Joints - Flange Mounting

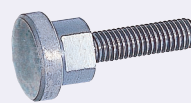
Cylinder Connector

For a set of Mount Flange and Cylinder Connector, refer to P.1419 and P.1420.

RoHS

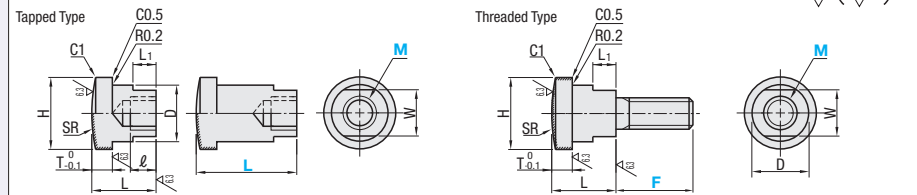


Threaded Type



Screws	Shape	Type		Material	Surface Treatment	Hardness
		L Fixed F Fixed	L Configurable F Configurable			
Tapped	Standard	FJCN	FJCNL	1045 Carbon Steel	Black Oxide	Part: 45-50HRC Induction Hardened Surface
		FJUNS	FJUNSL	440C Stainless Steel *	-	
	Space Saving	FJUN	-	1045 Carbon Steel	Black Oxide	
		FJUNFS	-	420 Stainless Steel Equivalent.	-	
Threaded	Standard	FJCNF	FJCNRF	1045 Carbon Steel	Black Oxide	
		FJCNFS	FJCNRS	440C Stainless Steel *	-	
	Space Saving	FJUNF	-	1045 Carbon Steel	Black Oxide	
		FJUNFS	-	420 Stainless Steel Equivalent.	-	

* Material for M24-30 of FJCNs is 420 Stainless Steel Equivalent.
* Material for FJCNFS M22 is 420 Stainless Steel Equivalent.



Tapped Type

Part Number	Type	M	L		Cylinder Connector								Unit Price			
			Fixed	Configurable (1mm Increment)	MxPitch	ℓ	D	H	T	W	L1	SR	FJCN	FJCNL	FJCNFS	FJCNRS
Standard	L Fixed FJCN FJCNL	3	15		3x0.5	6	12	17	5	10	6	40				
		4			4x0.7	8										
		5			5x0.8	10										
		6	20		6x1.0	12	14	19	6	12	8	50				
		8	25	30-60	8x1.25	14	16	23	8	14	10	60				
		10			10x1.25	15	20	27		17						
		12	35	40-80	12x1.25	18	25	34	10	22	12	100				
		14			14x1.5	21										
		16	45	50-100	16x1.5	24	32	43	12	27	15					
		18			18x1.5	27										
		20	55		20x1.5	30	40	52	15	32	18	200				
		22			22x1.5	33										
24	60	60-100	24x1.5	36	49	62	16	41	23							
26			26x1.5	39												
30	65		30x1.5	43	54	69	18	46	24	250						
			36x1.5	45				48								

440C Stainless Steel / 420 Stainless Steel Equivalent Hardened Type may be discolored due to hardening.

Part Number	Type	M	L	MxPitch	ℓ	Cylinder Connector				Unit Price				
						D	H	T	W	L1	SR	FJUN	FJUNS	
Space Saving	L Fixed FJUN FJUNS	5	17	5x0.8	10	12	16		10	6	50			
		6	20	6x1.0	12									
		8	23	8x1.25	14	16	22	5		13	8	60		
		10	25	10x1.25	15									
		12	29	12x1.25	18	22	30	5.5	19	10				
		14	33	14x1.5	21									
		16	37	16x1.5	24									
		18	41	18x1.5	27	28	36	8	21	12				
		20	46	20x1.5	30	32	42	10	26	15				
		22	50	22x1.5	33									
		24	55	24x1.5	36	38	48	12	32	16				
		26	60	26x1.5	39									
30	65	30x1.5	43	48	58	16	36	18	250					

420 Stainless Steel Equivalent Hardened Type may be discolored due to hardening. Space Saving Type is a special floating joint for air cylinders.

Threaded Type

Part Number	Type	M	Fixed	F Configurable (1mm Increment)	MxPitch (Coarse)	L	D	H	T	W	L1	SR	Unit Price			
													FJCNF	FJCNFS	FJCNRF	FJCNRS
Standard	F Fixed FJCNF FJCNFS	3	5	5-8	3x0.5	14	12	17	5	10	6	40				
		4	6	5-10	4x0.7											
		5	7	5-12	5x0.8											
		6	10	6-18	6x1.0	16	14	19	6	12	8	50				
		8	12	10-25	8x1.25	20	16	23	8	14	10	60				
		10	15	10-25	10x1.5	20	20	27		17						
		12	16	12-36	12x1.75	25	25	34	10	22	12	100				
		16	18	15-40	16x2.0	30	32	43	12	27	15	100				
		20	25	20-60	20x2.5	55	40	52	15	32	18	200				
		22	28	-	22x2.5											

440C Stainless Steel / 420 Stainless Steel Equivalent Hardened Type may be discolored due to hardening.

Part Number	Type	M	F	MxPitch (Coarse)	L	D	H	T	W	L1	SR	Unit Price		
												FJUNF	FJUNFS	
Space Saving	F Fixed FJUNF FJUNFS	5	10	5x0.8	14	12	16		10	3	50			
		6	13	6x1.0										
		8	15	8x1.25	15	16	22	5		13	60			
		10	18	10x1.5										
		12	22	12x1.75	16	22	30	5.5	19	4		100		
		20	32	20x2.5	20	28	36	8	21					
22	35	22x2.5	25	32	42	10	26	5	200					

420 Stainless Steel Equivalent Hardened Type may be discolored due to hardening. Space Saving Type is a special floating joint for air cylinders.

Ordering Example: Part Number **FJUN10**, **FJCNL10**, **FJCNFS10**, **FJCNRF10**

Days to Ship: [Configure Online](#)

Price: [Configure Online](#)

Alterations: Part Number **FJCNRF12**, **FJCNRS12**

Applicable to L and F Configurable only.

Alteration Code **NC**, Spec. **NC**, Price Adder **NC**