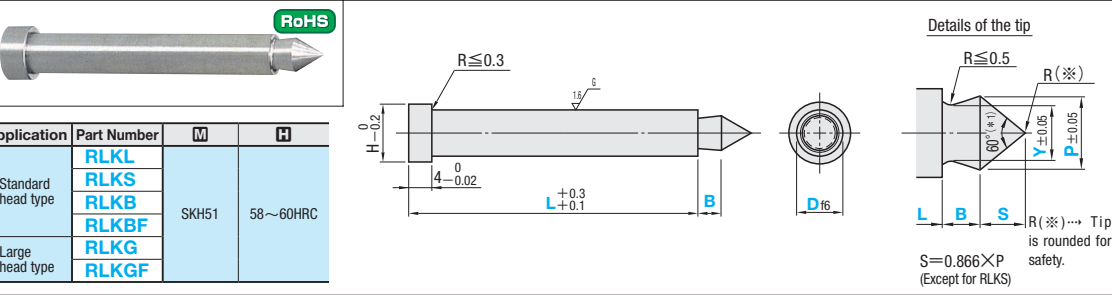


RUNNER LOCK PINS

—STRAIGHT, CONE-SHAPED TIP TYPE—



L dimension designation type

H	B	P	Y	Part Number Type	D	L	U/Price 1~4
4	2	1.5	1.0	RLKL (Standard head type)	2	10.0~100.0	Quotation
5	2	2.3	1.8		3		
6	2.5	2.8	2.3		4		
7	3	2.8	2.8		5		
8	3	3.8	3.0	RLKG (Large head type)	6	15.0~100.0	Quotation
10	4	5.8	5.0		8		

L · S dimension designation type

H	B	P	Y	Part Number Type	D	L	S	U/Price 1~4
4	2	1.5	1.0	RLKS (Standard head type)	2	10.0~100.0	1.3~3.0	Quotation
5	2	2.3	1.8		3		2.0~5.5	
6	2.5	2.8	2.3		4		2.5~7.5	
7	3	2.8	2.8		5		3.3~9.0	
8	3	3.8	3.0	RLKG (Large head type)	6	15.0~100.0	3.3~9.0	Quotation
10	4	5.8	5.0		8		5.1~8.0	

L · P · Y dimension designation type

RLKB	RLKG	B	Part Number Type	D	L	P	Y	U/Price 1~4
4	4	2	RLKB (Standard head type)	2	10.0~100.0	0.9~1.9	0.8~1.8	Quotation
5	6	3		0.9~2.9		0.8~2.8		
6	7	4		1.1~3.9		1.0~3.8		
7	8	5		1.3~4.9		1.2~4.8		
8	9	3	RLKG (Large head type)	6	15.0~100.0	1.6~5.9	1.5~5.8	Quotation
10	11	4		2.1~7.9		2.0~7.8		
13	15	5		2.6~9.9		2.5~9.8		

L · P · Y · B dimension designation type

RLKBF	RLKGF	B	Part Number Type	D	L	P	Y	B	U/Price 1~4
4	4	2	RLKBF (Standard head type)	2	10.0~100.0	0.9~1.9	0.8~1.8	1.0~3.0	Quotation
5	6	3		0.9~2.9		0.8~2.8	1.0~3.0		
6	7	4		1.1~3.9		1.0~3.8	1.3~3.8		
7	8	5		1.3~4.9		1.2~4.8	1.5~4.5		
8	9	3	RLKGF (Large head type)	6	15.0~150.0	1.6~5.9	1.5~5.8	1.5~4.5	Quotation
10	11	4		2.1~7.9		2.0~7.8	2.0~6.0		
13	15	5		2.6~9.9		2.5~9.8	2.5~7.5		

Order Part Number — L — P — Y — B

RLKL 3 — 37.5
RLKG 4 — 37.5 — P2.8 — Y2.3
RLKGF 4 — 37.5 — P2.8 — Y2.3 — B3.0

Days to Ship 3 Days
Delivery days depend on subsidiary. P.45

Price Quantity discount rate P.45

Quantity Rate	1~4	5~12	13~19	20~50
Rate	—	5%	10%	15%

To be quoted on price & lead time above Max. Q'ty.

Example ex Characteristics of cone-shaped tip type

- Runner cooling time is shortened and pull-out failure is prevented.
- Effective when runner is thick or when cooling is difficult.

Alterations Part Number — L — P — Y — B — (HC · LKC...etc.)

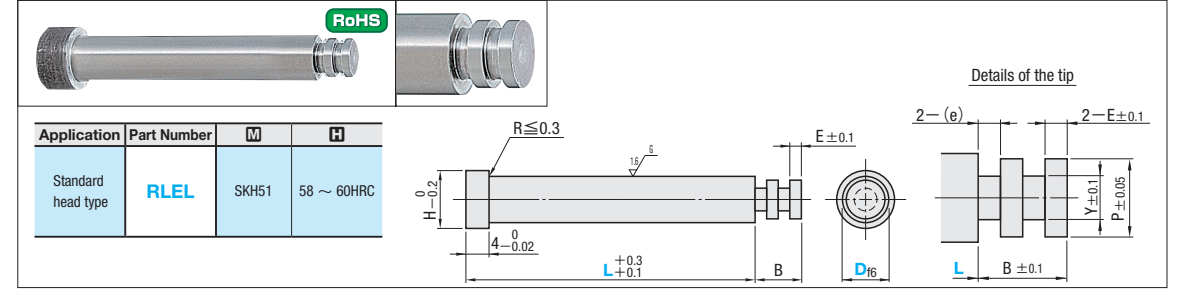
RLKBF 4 — 37.51 — P2.8 — Y2.3 — B2.4 — HC5 — LKC

Alterations	Code	Spec.	1Code
	HC	HC=0.1mm increments D ≤ HC < H	Quotation
	LKC	Changes L dimension tolerance L ₊ ± 0.3 → L ₊ ± 0.02 (L dimension designation in 0.01mm increments possible.)	
	TC	TC=0.1mm increments 2.0 ≤ TC < 4 L dimension remains unchanged even when TC is used. 4 - TC ≤ Lmax. - L	

RUNNER LOCK PINS / RUNNER LOCK PIN COLLARS

—STRAIGHT, SUPER HARD LOCK TYPE—

Non JIS material definition is listed on P.1359 - 1360



L dimension designation type

H	B	E (e)	P	Y	Part Number Type	D	L	U/Price 1~4
4	2	0.5	1.9	1	RLEL (Standard head type)	2	10.0~100.0	Quotation
5	2.4	0.6	2.5	1.5		3		
6	3.2	0.8	3.5	2.5		4		
7	4	1	4	3		5		
8	4.8	1.2	5	4		6		
10	6	1.5	6	5	8	15.0~100.0	Quotation	

Order Part Number — L

RLEL 4 — 50.2

Days to Ship 3 Days Express A P.46
Delivery days depend on subsidiary. P.45

Alterations Part Number — L — (HC · LKC...etc.)

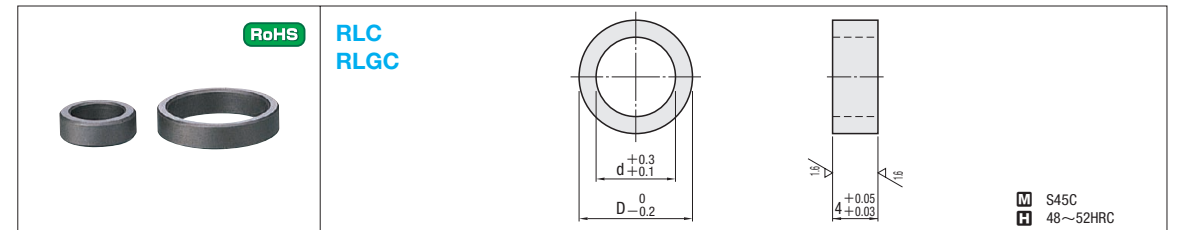
RLEL 4 — 50.25 — LKC

Price Quantity discount rate P.45

Quantity Rate	1~4	5~12	13~19	20~50
Rate	—	5%	10%	15%

To be quoted on price & lead time above Max. Q'ty.

Alterations	Code	Spec.	1Code
	HC	HC=0.1mm increments D ≤ HC < H	Quotation
	LKC	Changes L dimension tolerance L ₊ ± 0.3 → L ₊ ± 0.02 (L dimension designation in 0.01mm increments possible.)	
	TC	TC=0.1mm increments 2.0 ≤ TC < 4 L dimension remains unchanged even when TC is used. 4 - TC ≤ Lmax. - L	



Runner lock pin diameter (D)	D	d	Part Number Type	No.	U/Price 1~4
2	7	4	RLC (For standard head type)	2	Quotation
3	8	5		3	
4	9	6		4	
5	10	7		5	
6	12	8		6	
8	14	10	RLGC (For large head type)	8	Quotation
10	17	13		10	
6	13	9		6	
8	15	11		8	
10	19	15		10	

Order Part Number RLC 6 RLCG 6

Days to Ship 3 Days Express T Express A P.46
Delivery days depend on subsidiary. P.45

Price Quantity discount rate P.45

Quantity Rate	1~4	5~12	13~19	20~50
Rate	—	5%	10%	15%

To be quoted on price & lead time above Max. Q'ty.

Example ex If the screw plug is tightened excessively, the runner lock pin may incline, leading to a scuffing or flange destruction. These collars are used to prevent this kind of trouble.

Applicable Screw Plugs (when using collar)
For details of the screw plug specifications P.1199.

Runner lock pin diameter (D)	Head dia.	Collar size	Applicable Screw Plugs
2	2	4 RLC 2	MSW10
2.5	—	5 RLC 3	
3	—	5 RLC 3	MSW12
4	2.5 · 3	6 RLC 4	
5	4	7 RLC 5	MSW14
6	5	8 RLC 6	MSW16
—	6	9 RLCG 6	MSW16
8	—	10 RLC 8	MSW18
—	8	11 RLCG 8	
10	—	13 RLC 10	MSW20
—	10	15 RLCG 10	MSW22

※ Fine thread (Pitch 1.5)