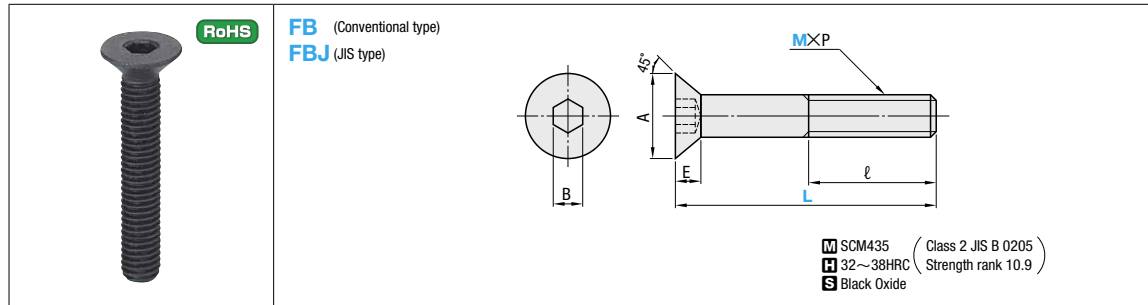


SOCKET HEAD CAP SCREWS

BOLTS FOR EJECTOR PLATE SET

ⓘ Non JIS material definition is listed on P.1351 - 1352



■ Conventional Type (E dimension space saving standard)

M×P (Coarse thread)	A		E		B	ℓ	Part Number Type M-L	U/Price 1~99	Slide Unit Price 100~
	min.	max.	min.	max.					
M4 × 0.7	7.64	8.00	2.16	2.30	2.5	Full Thread	FB 4-10		
							15		
							20		
							25		
							30		
M5 × 0.8	9.64	10.00	2.66	2.80	3.0	Full Thread	FB 5-10		
							12		
							15		
							16		
							20		
M6 × 1.0	11.57	12.00	3.12	3.30	4.0	Full Thread	FB 6-10		
							12		
							15		
							16		
							20		
M8 × 1.25	15.57	16.00	4.22	4.40	5.0	Full Thread	FB 8-15		
							20		
							25		
							30		
							35		
M10×1.5	19.48	20.00	5.32	5.50	6.0	Full Thread	FB 10-20		
							22		

■ JIS Type

M×P (Coarse thread)	A		E		B	ℓ	Part Number Type M-L	U/Price 1~99	Slide Unit Price 100~
	min.	max.	min.	max.					
M4 × 0.7	7.53	8.96	2.23	2.48	2.5	Full Thread	FBJ 4-10		
							15		
							20		
							25		
							30		
M5 × 0.8	9.43	11.20	2.80	3.10	3.0	Full Thread	FBJ 5-10		
							12		
							15		
							16		
							20		
M6 × 1.0	11.34	13.44	3.30	3.72	4.0	Full Thread	FBJ 6-10		
							12		
							15		
							16		
							20		
M8 × 1.25	15.24	17.92	4.40	4.96	5.0	Full Thread	FBJ 8-15		
							20		
							25		
							30		
							35		
M10×1.5	19.22	22.40	5.50	6.20	6.0	Full Thread	FBJ 10-20		
							28		

ⓘ To be quoted on price & lead time above Max. Q'ty.

ⓘ To be quoted on price & lead time above Max. Q'ty.

ⓘ FB is compliant with SSS (Socket Screw Society of Japan) standards. (Previously, there was no JIS standard for Socket Head Cap Screws and this organization established its own standard.)
 ⓘ The E dimension is shorter than the JIS standard.

ⓘ FBJ is compliant with JIS standard JIS B 1194 (2000). (First standardized by JIS in 2000)
 ⓘ JIS displays only the max. value for the E dimension.

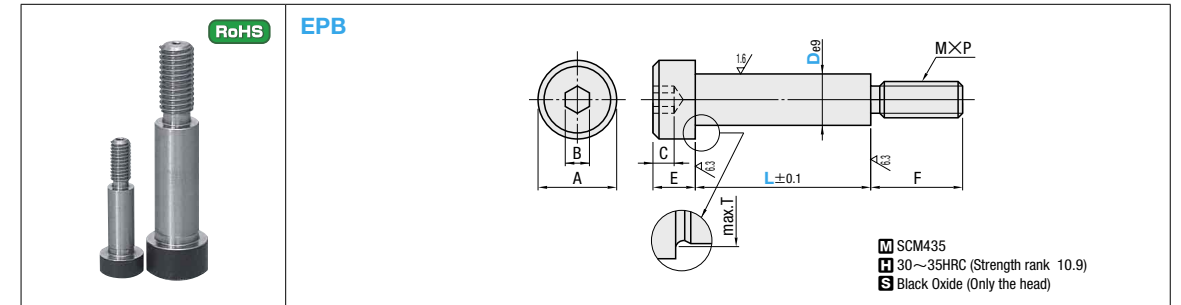
Order Part Number
FB5-10

Days to Ship Quotation

※ "Strength rank" signifies tensile strength of bolts.

(Example) 10.9
 ↳ Indicates that the yield point or the minimum proof strength is 90% of the tensile strength.
 ↳ Indicates that the minimum tensile strength is 980N/mm²(100kgf/mm²)

[Technical Data]
 ↳ Screw lower hole table P.1355



De9		A	B	C	E	F	M×P	T
13	-0.032 -0.075	18	8	5	10	20	M10×1.5	14
16		24	10	7	14	24	M12×1.75	17
20	-0.040 -0.092	27	14	9	18	32	M16×2.0	21
25		33	17	11	19	40	M20×2.5	26

Part Number Type	D	L														U/Price 1~19	Slide Unit Price 20~49														
		10	13	16	20	25	30	35	40	45	50	55	60	65	70			75	80	85	90	95	100	105	110	115	120	125	130	135	140
EPB	10	31	36	41	46	51	56	61																							
	13	31	36	41	46	51	56	61	66	71																					
	16	51 56 61 66 71 76 81 91 101 111 121 131																													
	20	61 66 71 76 81 91 101 111 121 131 141																													
	25	121 131 141 151 161																													

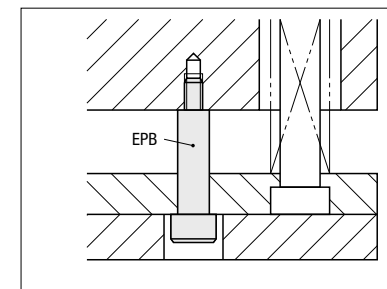
ⓘ No knurling on the head.

ⓘ To be quoted on price & lead time above Max. Q'ty.

Order Part Number - L
EPB10 - 51

Days to Ship Quotation

Example
 • Use when pushing up and fixing the ejector plate such as when setting or replacing the ejector pin.
 • The L dimension is a 5mm unit + 1mm to conform to the 5mm step space. Consequently, it is possible to install the die on the molding machine without creating a counterbore on the top of the ejector plate.
 • The threaded part (F dimension) is long, enabling the ejector plate to be set easily without being subjected to the spring load.



■ Size F comparison table

D	M×P	F	
		EPB	Shoulder Bolt MSB · MSBL (P.1191~1192)
10	M 8×1.25	16	12
13	M10×1.5	20	16
16	M12×1.75	24	18
20	M16×2.0	32	24
25	M20×2.5	40	30