

LIFTING EYE BOLTS / CAST-IN LIFTING BOLTS

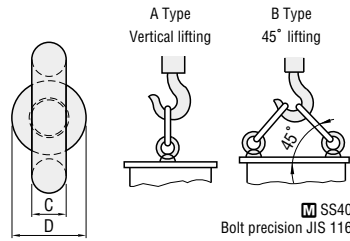
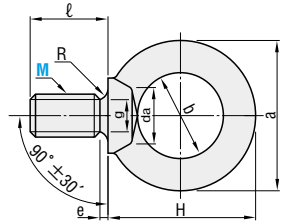
HOOKS

—BOLT TYPE / LARGE HEAD BOLT TYPE—

Lifting eye bolts —For vertical lifting—

RoHS

CHI



M×P	a	b	C	D	H	l	e	g	R	da	Max. allowable load N (kgf)		Catalog No.	Base unit price	Volume discount unit price											
											A: Vertical, 1 bolt	B: 45°, 2 bolts			Type	M	1~19 pieces	20~49	50~99	100~200						
6×1.0	24.9	14.5	5.2	12.8	28.5	15	3	4.7	1.0	7.9	392 (40)	392 (40)	CHI	S400	1168	6	8	10	12	16	20	24	30	36	42	48
8×1.25	32.6	20	6.3	16	33.3	15	3	6	1.0	9.2	785 (80)	785 (80)														
10×1.5	41	25	8	20	41.5	18	4	7.7	1.2	11.2	1471 (150)	1471 (150)														
12×1.75	50	30	10	25	51	22	5	9.4	1.4	14.2	2157 (220)	2157 (220)														
16×2.0	60	35	12.5	30	60	27	5	13	1.6	18.2	4413 (450)	4413 (450)														
20×2.5	72	40	16	35	71	30	6	16.4	2	22.4	6178 (630)	6178 (630)														
24×3.0	90	50	20	45	90	38	8	19.6	2.5	26.4	9316 (950)	9316 (950)														
30×3.5	110	60	25	60	110	45	8	25	3	33.4	14710 (1500)	14710 (1500)														
36×4.0	133	70	31.5	70	132	55	10	30.3	3	39.4	22555 (2300)	22555 (2300)														
42×4.5	151	80	35.5	80	151	65	12	35.6	3.5	45.6	33342 (3400)	33342 (3400)														
48×5.0	170	90	40	90	170	70	12	41	4	52.6	44130 (4500)	44130 (4500)														

•Load (kgf)=Load (N)×0.101972

Installation

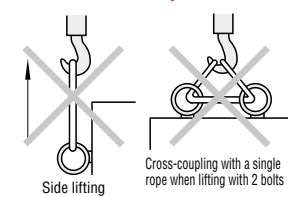
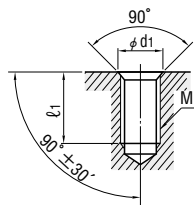
Tighten the lifting eye bolt lightly by hand so that the seat of the bolt is firmly in contact with the plate.

When 2 lifting eye bolts are used for lifting, install the bolts so that they face in the same direction.



Never attempt the types of lifting shown in the diagram.

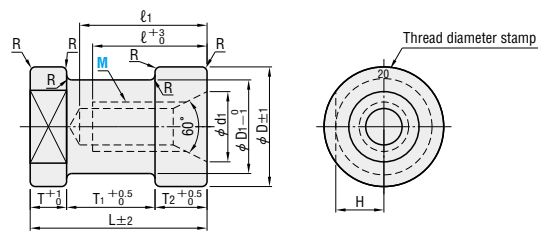
Catalog No.	d ₁	l ₁
6	9	17
8	11	17
10	13	20
12	16	24
16	20	30
20	24	34
24	28	42
30	36	50
36	42	60
42	48	70
48	56	76



Cast-in lifting bolts

RoHS

CSN



Lifting bolt	Max. allowable load N (kgf)	M×P	D	D ₁	d ₁	l	l ₁	L	T	T ₁	T ₂	H	R	Catalog No.		Base unit price	
														Type	M		
2 bolts	Vertical, 1 bolt 45°, 2 bolts	12×1.75	38	28	18	30	40	55	10	30	15	14	2	CSN	12	1~19 pieces	
3730 (380)	2160 (220)	2160 (220)	16×2.0	46	36	22	35	45	10	30	15	18	2				
6620 (675)	4410 (450)	4410 (450)	20×2.5	48	38	28	45	55	70	15	35	20	19				2
8830 (900)	5880 (600)	5880 (600)	24×3.0	55	45	36	55	65	85	20	45	20	22.5				2
13340 (1360)	9810 (1000)	9810 (1000)	30×3.5	65	52	42	65	75	95	25	50	20	26				3
19810 (2020)	16670 (1700)	16670 (1700)	36×4.0	85	70	48	75	90	110	30	55	25	35				3

•Load (kgf)=Load (N)×0.101972

Order **CHI 10**
CSN 24

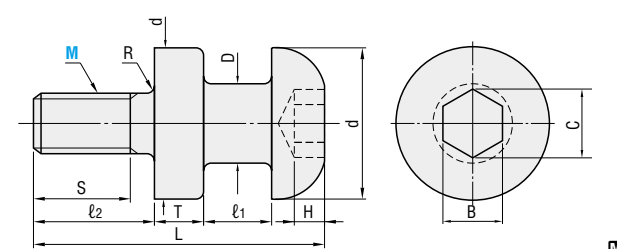
Price **Quotation**

Days to Ship **Quotation**

Example

RoHS

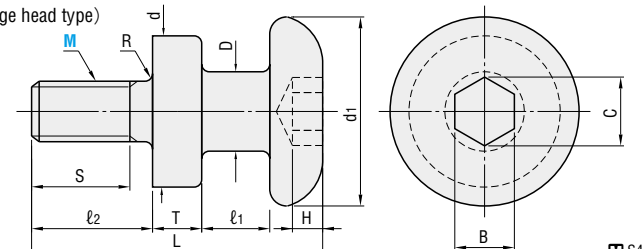
CHN



S45C
Black oxide (Fe₃O₄)

RoHS

CHNL (Large head type)

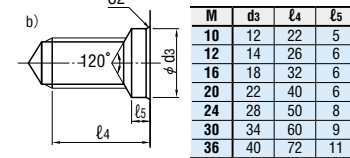
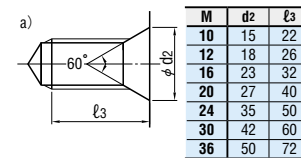


S45C
Black oxide (Fe₃O₄)

M×P	D	d	d ₁	l ₁		l ₂	S	T	L		R	H	B	C	N/piece (kgf/piece) (For steel, safety factor 10)	Catalog No.			
				CHN	CHNL				CHN	CHNL						Type	M	CHN	CHNL
10×1.5	13	32	42	10	18	20	16	8	46	54	1.5	5	8	9.2	2452 (250)	CHN CHNL	10	12	16
12×1.75	16	36	48	13	20	24	20	10	57	64	1.5	6	10	11.7	3530 (360)				
16×2.0	20	40	52	18	25	30	25	13	75	82	2	9	14	16.3	6669 (680)				
20×2.5	25	48	62	20	28	37	32	16	90	98	2	12	17	19.8	10395 (1060)				
24×3.0	32	58	76	25	33	47	40	20	111	119	2.5	13	19	22.1	15004 (1530)				
30×3.5	36	68	88	30	40	56	48	22	131	141	3	16	22	25.6	23830 (2430)				
36×4.0	40	78	100	30	40	68	58	25	148	158	3	18	27	31.4	34814 (3550)				

•Load (kgf)=Load (N)×0.101972

Installation The bolt holes for installation should be machined as shown in figure a) or b) below. The head of CHN and CHNL should be in tight contact with the side surface of the die set when the bolts are used.



Order **CHNL 20**

Example

Days to Ship **Quotation**

Price **Quotation**

※Install so that the wire can be passed under the hook without contacting the bottom surface. <Large head type>